

sheet index

| | |
|-------|--|
| 1 | L000 - Cover sheet |
| 2 | L001 - Project notes & sheet index |
| 3 | C101 - Demolition plan |
| 4 | LS100 - Overall site plan |
| 5 | LS101 - Bid alternate plan |
| 6 | LS102 - Overall sign plan - bid alternate |
| 7-9 | LS401 - LS403 - Site plan enlargement |
| 10-13 | LS501 - LS504 - Site plan details |
| 14 | LS505 - CXT restroom plan excerpts |
| 15-24 | C001 - C503 - Civil plans |
| 25-41 | EE001 - EJ101 - Electrical plans |
| 42 | S1.0 - Structural plans |
| 43 | LP100 - Overall landscape plan - base bid |
| 44-45 | LP101 - LP102 - Bid alternate landscape plan |
| 46-50 | LP201 - LP205 - Landscape Plan |
| 51-52 | LP501 - LP502 - Landscape details |
| 53 | LI100 - Overall irrigation plan |
| 54-58 | LI101 - LI105 Irrigation plan |
| 59-61 | LI501 - LI503 Irrigation details |



project team

OWNER

Nibley City
 455 W 3200 S,
 Nibley, UT 84321
 P: 435.752.0431 CONTACT: Tom Dickinson
 F: -- E-MAIL: td@nibleycity.com



LANDSCAPE ARCHITECT

blu line designs
 8719 S. Sandy Parkway
 Sandy, Utah 84070
 P: 801.703.6383 CONTACT: Rob Donigan
 F: -- E-MAIL: rob@blulinedesigns.com



SURVEY/ CIVIL

Civil Solutions Group
 498 W 100 S,
 Providence, UT 84332
 P: 435.213.3762 CONTACT: Tyler Munk
 F: 435.760.2986 E-MAIL: tmunk@civilsolutionsgroup.net



ELECTRICAL ENGINEER

Spectrum Engineers
 324 S. State St., Suite 400
 Salt Lake City, UT 84111
 P: 801.328.5151 CONTACT: Spencer Little
 F: 801.328.5155 E-MAIL: spencer.little@speceng.com

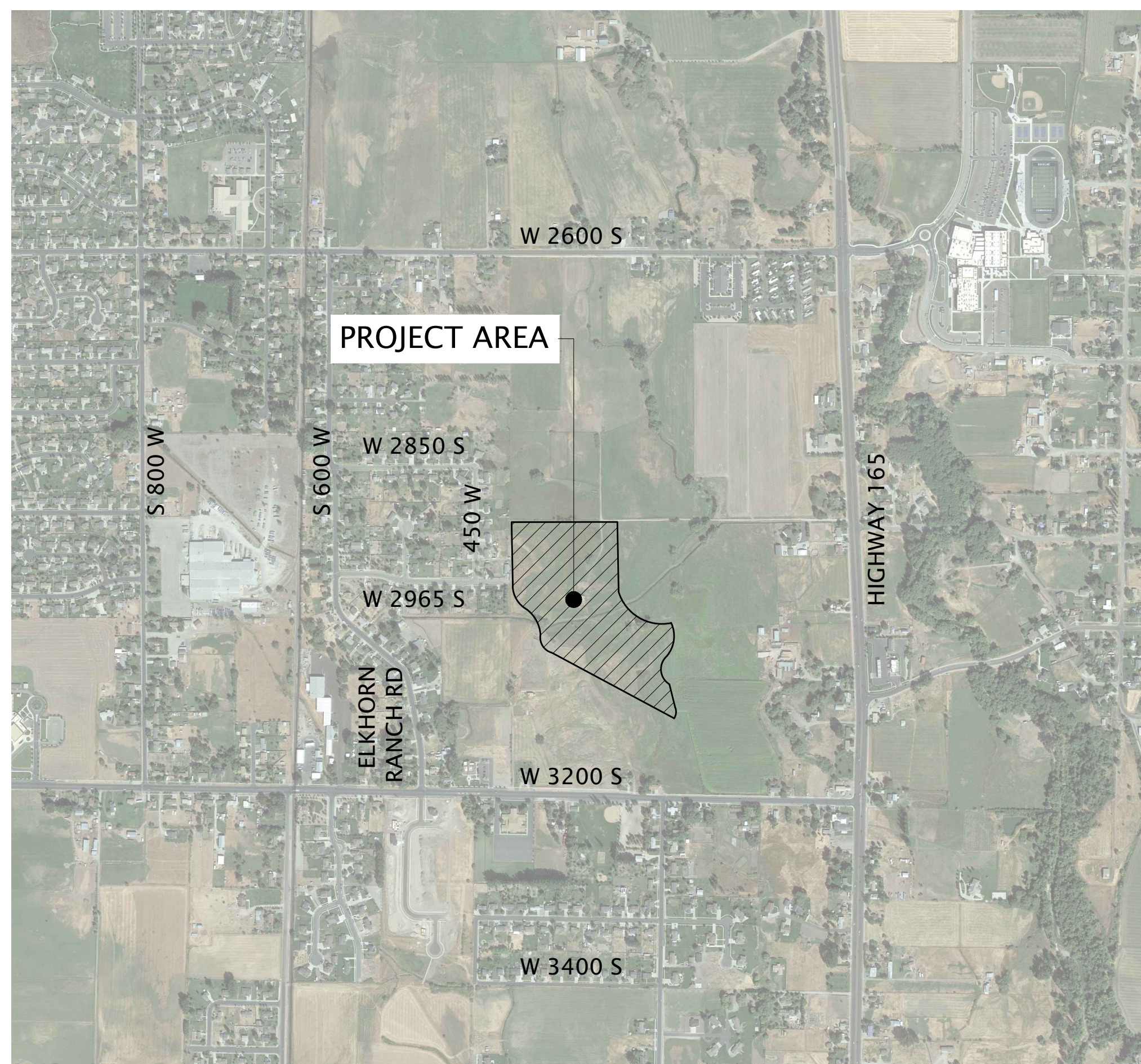


General Notes

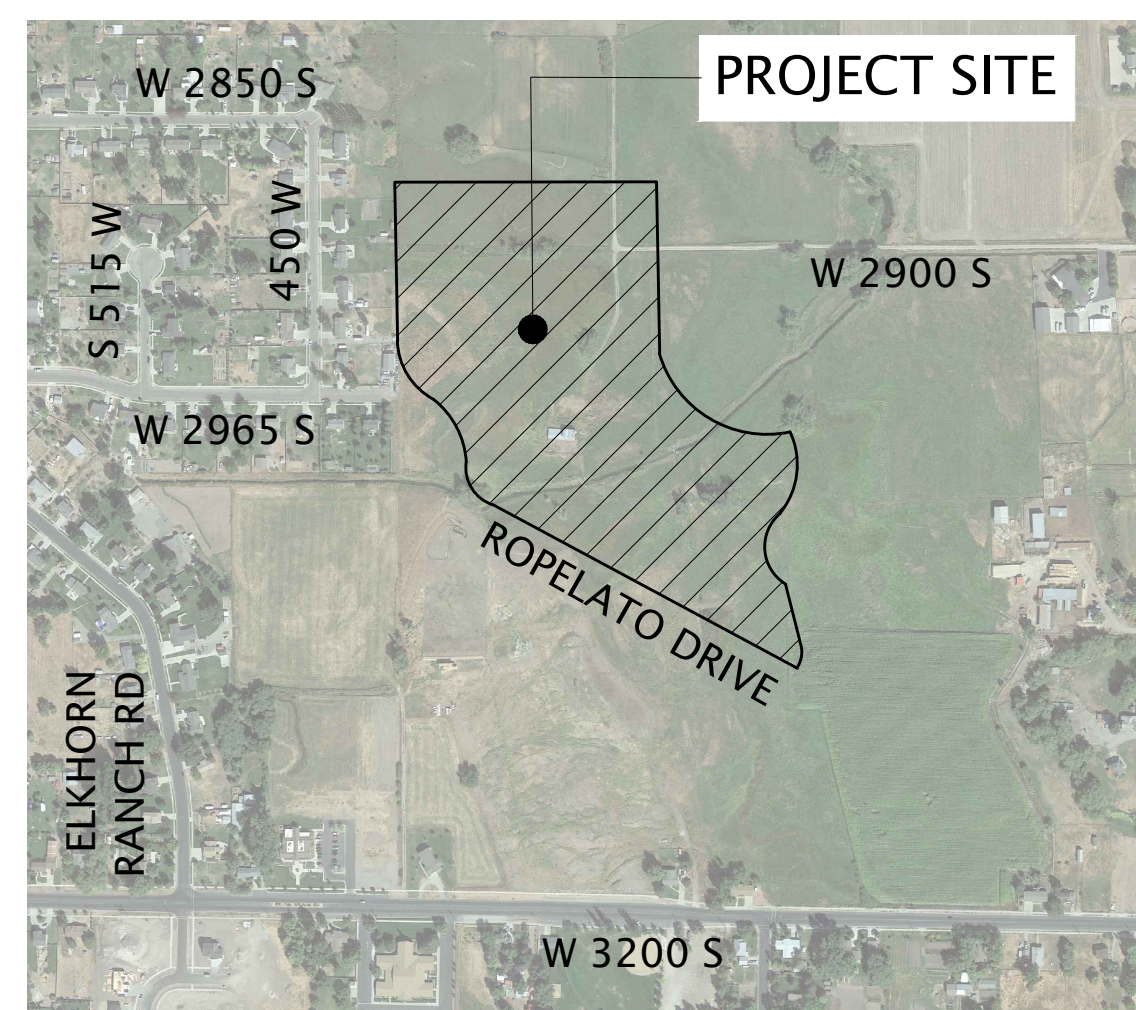
- ALL CONSTRUCTION SHALL BE DONE IN ACCORDANCE WITH THE LATEST AMERICAN PUBLIC WORKS ASSOCIATION (APWA) AND NIBLEY CITY STANDARDS, SPECIFICATIONS, AND DETAILS. ALL WORK AND MATERIALS NOT IN CONFORMANCE WITH THESE ARE SUBJECT TO REMOVAL AND REPLACEMENT AT THE CONTRACTOR'S EXPENSE.
- EXISTING UTILITIES, EASEMENTS, AND STRUCTURES SHOWN ON THE DRAWINGS ARE IN ACCORDANCE WITH AVAILABLE RECORDS. THE CONTRACTOR SHALL VERIFY THE EXACT LOCATION, SIZE, TYPE, AND STRUCTURES TO BE ENCOUNTERED ON THE PROJECT PRIOR TO ANY EXCAVATION AND CONSTRUCTION IN THE VICINITY OF THE EXISTING UTILITIES AND STRUCTURES.
- IT SHALL BE THE CONTRACTOR'S RESPONSIBILITY TO OBTAIN ALL REQUIRED PERMITS, LICENSES, AND APPROVALS REQUIRED TO LEGALLY AND RESPONSIBLY COMPLETE THE WORK.
- THE CONTRACTOR IS RESPONSIBLE FOR THE REMOVAL, DISPOSAL, OR RELOCATION OF ALL OBSTRUCTIONS AND DEBRIS WITHIN THE DELINEATED CONSTRUCTION AREA PRIOR TO STARTING NEW CONSTRUCTION. THE CONTRACTOR IS ALSO RESPONSIBLE FOR THE REMOVAL AND DISPOSAL OF ANY DEBRIS RESULTING FROM NEW CONSTRUCTION.
- CONTRACTOR SHALL TAKE PRECAUTIONS TO AVOID DAMAGE TO EXISTING FEATURES AND FACILITIES SCHEDULED TO REMAIN AS PART OF THE FINISHED CONSTRUCTION. REPAIR, REPLACEMENT, AND/OR REMOVAL AS DETERMINED BY OWNER SHALL BE AT THE CONTRACTOR'S EXPENSE.
- THE CONTRACTOR SHALL BE RESPONSIBLE TO ADJUST THE TOPS OF ALL EXISTING MANHOLES, CATCH BASINS, INLETS, COVERS, AND SIMILAR STRUCTURES TO FINISH GRADE.
- THE CONTRACTOR SHALL CALL BLUE STAKES AT 1-800-662-4111 FOR UNDERGROUND UTILITY LOCATIONS AT LEAST 48 HOURS PRIOR TO COMMENCEMENT OF ANY CONSTRUCTION OR EXCAVATION.
- A SUBSTANTIAL COMPLETION OF LANDSCAPE ITEMS IS TO BE MET BEFORE THE PROJECT IS CONCLUDED. THIS INCLUDES ESTABLISHED TURF, TREES, SHRUBS, ETC. A ONE YEAR WARRANTY SHALL BE PROVIDED AND REMOVAL/REPLACEMENT OF DEFICIENT PRODUCTS AT FINAL ACCEPTANCE. THE PROJECT SHALL NOT BE CONSIDERED COMPLETE UNTIL ALL CURBS, PAVEMENT, AND SIDEWALKS HAVE BEEN SWEEPED CLEAN OF ALL DIRT AND DEBRIS. DURING THE ONE YEAR WARRANTY THE CONTRACTOR SHALL BE REQUIRED TO MAINTAIN TURF, TREES, SHRUBS, ECT. THIS INCLUDES WINTERIZING SPRINKLER SYSTEM.
- CONTRACTOR SHALL ROUGH GRADE TO WITHIN +/- A TENTH OF A FOOT FROM FINISH GRADE.

- ALL SPOT ELEVATIONS ARE FINISH GRADE UNLESS OTHERWISE NOTED.
- ALL CLARIFICATIONS OF DISCREPANCIES BETWEEN THE DRAWINGS AND THE SITE SHALL BE BROUGHT TO THE ATTENTION OF THE OWNER'S REPRESENTATIVE PRIOR TO BEGINNING OF WORK.
- CROSS SLOPES ON ALL NEW HARDSCAPE AND PAVEMENT SHALL NOT EXCEED 2% UNLESS OTHERWISE SHOWN.
- ALL AREAS WITHIN AND AFFECTED BY THIS PROJECT SHALL HAVE POSITIVE DRAINAGE. POSITIVE DRAINAGE SHALL BE PROVIDED TO DIRECT STORMWATER AWAY FROM ALL STRUCTURES.
- CONTRACTOR SHALL PROVIDE AND MAINTAIN A STORM WATER POLLUTION PREVENTION PLAN (SWPPP) AS REQUIRED BY NIBLEY CITY AND THE STATE OF UTAH.
- WETLANDS ARE TO BE PROTECTED PER FEDERAL GUIDELINES.

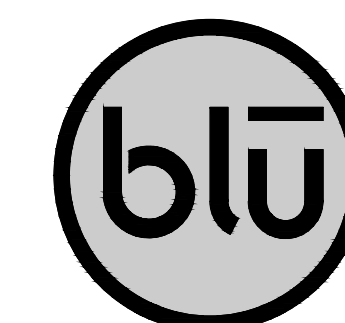
project location



project area



project site



blu line designs
 planning | landscape architecture | design

8719 S. Sandy Parkway
 Sandy, UT 84070
 p 801.679.3157

OWNER:
 NIBLEY CITY
 455 W 3200 S,
 Nibley, UT 84321

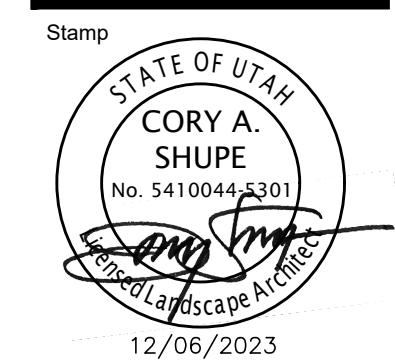
CONTACT:
 TOM DICKINSON
 PH: 435.752.0431



CONSTRUCTION DOCUMENTS

RIDGELINE PARK | PHASE 1
 401 W EST ROPELATO DRIVE
 NIBLEY, UT 84321

| REVISIONS | |
|-----------|-------------------------|
| NO. | DESCRIPTION |
| 1 | ISSUED FOR CONSTRUCTION |



Designed By: RD
 Drawn By: TH
 Date: 12/06/2023
 Checked By: CS
 Project No: 22-209

Drawing Title
PROJECT NOTES & SHEET INDEX

Drawing number

L001

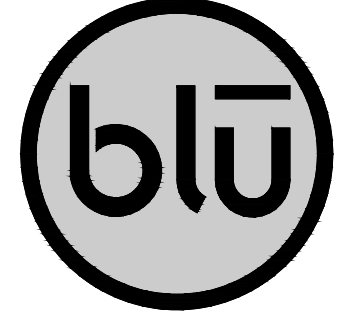


LEGEND

- PROPERTY BOUNDARY
- PHASE 1 CONSTRUCTION LIMIT LINE
- EXISTING WETLAND

REFERENCE NOTES SCHEDULE

| SYMBOL | DESCRIPTION | DETAIL |
|--------|--|----------|
| 1 | CONCRETE SIDEWALK/PLAZA | 1/LS501 |
| 2 | CONCRETE PAVILION PAD | 1/LS501 |
| 3 | ASPHALT PARKING - SEE CIVIL DRAWINGS | |
| 4 | PARKING LOT STRIPING - SEE CIVIL DRAWINGS | |
| 5 | DRIVE APPROACH - SEE CIVIL DRAWINGS | |
| 6 | CURB AND GUTTER - SEE CIVIL DRAWINGS | |
| 7 | EXISTING CURB AND GUTTER TO REMAIN | |
| 8 | ADA RAMP - SEE CIVIL DRAWINGS | |
| 9 | ADA PARKING STALLS - SEE CIVIL DRAWINGS | |
| 10 | ADA PARKING SIGNS - SEE CIVIL DRAWINGS | |
| 11 | 6" CONCRETE EDGER | 2/LS501 |
| 12 | CONCRETE STAIRS | 3/LS501 |
| 13 | LINEAR STONE SITTING WALL | 4/LS501 |
| 14 | THICKENED CONCRETE EDGE | 5/LS501 |
| 15 | ADA PLAYGROUND RAMP | 7/LS501 |
| 16 | PLAYGROUND - SEE LS403 | |
| 17 | ENGINEERED WOOD FIBER | |
| 18 | WETLAND BOARDWALK | 9/LS501 |
| 19 | OVERLOOK DECK | 9/LS501 |
| 20 | PEDESTRIAN BRIDGE | 9/LS501 |
| 21 | 3 RAIL FENCE | 1/LS502 |
| 22 | PICKLEBALL COURT - SEE ENLARGEMENTS 1-2- LS402 | |
| 23 | PICKLEBALL COURT STRIPING | |
| 24 | PICKLEBALL COURT PERIMETER FENCE - 6' TALL | 2/LS502 |
| 25 | PICKLEBALL MAN-GATES - 6' TALL | 3/LS502 |
| 26 | PICKLEBALL COURT INTERIOR FENCE - 4' TALL | 4/LS502 |
| 27 | PICKLEBALL NET AND POSTS | 5/LS502 |
| 28 | PICKLEBALL MAINTENANCE GATE | 6/LS502 |
| 29 | ICONIC FEATURE 1 | 9/LS503 |
| 30 | ICONIC FEATURE 2 | 10/LS503 |
| 31 | PARK ENTRY SIGN | 1/LS504 |
| 32 | CORTEZ CXT RESTROOM - SEE LS505 | |
| 33 | 20' DIA. PAVILION | 7/LS503 |
| 34 | 20' DIA. PAVILION - BID ALTERNATE | 7/LS503 |
| 35 | 30' DIA. PAVILION - BID ALTERNATE | 7/LS503 |
| 36 | OPEN CHANNEL WATER FEATURE - SEE SECTIONS- LS505 | |
| 37 | BOULDERING AREA - SEE LS401 | |
| 38 | CLIMBING BOULDER - SEE LS401 | |
| 39 | ARTIFICIAL TURF | 10/LS502 |
| 40 | CORN HOLE | 8/LS502 |
| 41 | 9 SQUARE | 9/LS502 |
| 42 | GAGA PIT | 1/LS503 |
| 43 | PICNIC TABLE | 6/LS503 |
| 44 | BENCH | 3/LS503 |
| 45 | TRASH RECEPTACLE | 5/LS503 |
| 46 | EXPANSION JOINT AT POST-TENSION CONCRETE SLAB | 7/LS502 |
| 64 | PICKLEBALL SHADE CANOPY | |
| 65 | ADA PICNIC TABLE | |
| 66 | PLAYGROUND CURB | 11/LS501 |
| SYMBOL | DESCRIPTION | DETAIL |
| | ENGINEERED WOOD FIBER | |
| | FLAGSTONE | 7/LS504 |
| | ARTIFICIAL TURF | 10/LS502 |



blu line designs
 planning | landscape architecture | design
 8719 S. Sandy Parkway
 Sandy, UT 84070
 p 801.679.3157

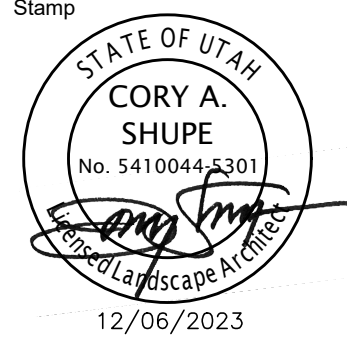
OWNER:
 NIBLEY CITY
 455 W 3200 S,
 Nibley, UT 84321

CONTACT:
 TOM DICKINSON
 PH: 435.737.5848



RIDGELINE PARK | PHASE 1
 401 W WEST ROPELATO DRIVE
 NIBLEY, UT 84321

| REVISIONS | |
|-----------|-------------|
| NO. | DESCRIPTION |
| 1 | ISSUE |



Designed By: RD
 Drawn By: TH
 Date: 12/06/2023
 Checked By: CS
 Project No: 22-209

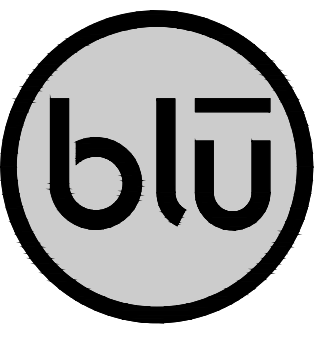
Drawing Title
OVERALL SITE PLAN

Drawing number
LS100

CONSTRUCTION DOCUMENTS

Scale: 1" = 50'-0"





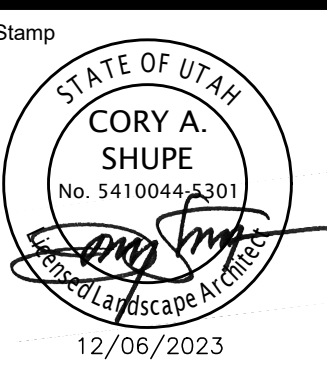
blu line designs
 planning | landscape architecture | design
 8719 S. Sandy Parkway
 Sandy, UT 84070
 p 801.679.3157

OWNER:
 NIBLEY CITY
 455 W 3200 S,
 Nibley, UT 84321
 CONTACT:
 TOM DICKINSON
 PH: 435.737.5848



RIDGELINE PARK | PHASE 1
 401 W EST ROPELATO DRIVE
 NIBLEY, UT 84321

| REVISIONS | |
|-----------|--------------------|
| NO. | DATE / DESCRIPTION |
| 1 | 12/06/2023 |



Designed By: RD
 Drawn By: TH
 Date: 12/06/2023
 Checked By: CS
 Project No: 22-209

Drawing Title
BID ALTERNATE PLAN
 Drawing number

LS101

LEGEND

- PROPERTY BOUNDARY
- - - BID ALTERNATE LIMIT LINE
- EXISTING WETLAND

REFERENCE NOTES SCHEDULE

| SYMBOL | DESCRIPTION | DETAIL |
|--------|--|----------|
| 1 | CONCRETE SIDEWALK/PLAZA | 1/LS501 |
| 2 | CONCRETE PAVILION PAD | 1/LS501 |
| 3 | ASPHALT PARKING - SEE CIVIL DRAWINGS | |
| 4 | PARKING LOT STRIPING - SEE CIVIL DRAWINGS | |
| 5 | DRIVE APPROACH - SEE CIVIL DRAWINGS | |
| 6 | CURB AND GUTTER - SEE CIVIL DRAWINGS | |
| 7 | EXISTING CURB AND GUTTER TO REMAIN | |
| 8 | ADA RAMP - SEE CIVIL DRAWINGS | |
| 9 | ADA PARKING STALLS - SEE CIVIL DRAWINGS | |
| 10 | ADA PARKING SIGNS - SEE CIVIL DRAWINGS | |
| 11 | 6" CONCRETE EDGER | 2/LS501 |
| 12 | CONCRETE STAIRS | 3/LS501 |
| 13 | LINEAR STONE SITTING WALL | 4/LS501 |
| 14 | THICKENED CONCRETE EDGE | 5/LS501 |
| 15 | ADA PLAYGROUND RAMP | 7/LS501 |
| 16 | PLAYGROUND - SEE LS403 | |
| 17 | ENGINEERED WOOD FIBER | |
| 18 | WETLAND BOARDWALK | 9/LS501 |
| 19 | OVERLOOK DECK | 9/LS501 |
| 20 | PEDESTRIAN BRIDGE | 9/LS501 |
| 21 | 3 RAIL FENCE | 1/LS502 |
| 22 | PICKLEBALL COURT - SEE ENLARGEMENTS 1-2- LS402 | |
| 23 | PICKLEBALL COURT STRIPING | |
| 24 | PICKLEBALL COURT PERIMETER FENCE - 6' TALL | 2/LS502 |
| 25 | PICKLEBALL MAN-GATES - 6' TALL | 3/LS502 |
| 26 | PICKLEBALL COURT INTERIOR FENCE - 4' TALL | 4/LS502 |
| 27 | PICKLEBALL NET AND POSTS | 5/LS502 |
| 28 | PICKLEBALL MAINTENANCE GATE | 6/LS502 |
| 29 | ICONIC FEATURE 1 | 9/LS503 |
| 30 | ICONIC FEATURE 2 | 10/LS503 |
| 31 | PARK ENTRY SIGN | 1/LS504 |
| 32 | CORTEZ CXT RESTROOM - SEE LS505 | |
| 33 | 20' DIA. PAVILION | 7/LS503 |
| 34 | 20' DIA. PAVILION - BID ALTERNATE | 7/LS503 |
| 35 | 30' DIA. PAVILION - BID ALTERNATE | 7/LS503 |
| 36 | OPEN CHANNEL WATER FEATURE - SEE SECTIONS- LS505 | |
| 37 | BOULDERING AREA - SEE LS401 | |
| 38 | CLIMBING BOULDER - SEE LS401 | |
| 39 | ARTIFICIAL TURF | 10/LS502 |
| 40 | CORN HOLE | 8/LS502 |
| 41 | 9 SQUARE | 9/LS502 |
| 42 | GAGA PIT | 1/LS503 |
| 43 | PICNIC TABLE | 6/LS503 |
| 44 | BENCH | 3/LS503 |
| 45 | TRASH RECEPTACLE | 5/LS503 |
| 46 | EXPANSION JOINT AT POST-TENSION CONCRETE SLAB | 7/LS502 |
| 64 | PICKLEBALL SHADE CANOPY | |
| 65 | ADA PICNIC TABLE | |
| 66 | PLAYGROUND CURB | 11/LS501 |
| | ENGINEERED WOOD FIBER | |
| | FLAGSTONE | 7/LS504 |
| | ARTIFICIAL TURF | 10/LS502 |

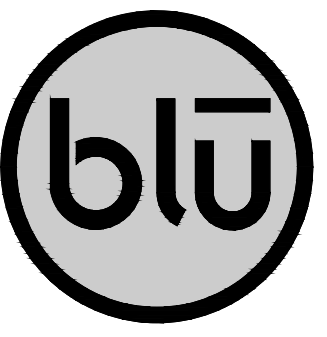
Scale: 1" = 50'-0"



BID ALTERNATE SUMMARY:
 BID ALTERNATE NO. 1 (BA-1): WETLAND BOARDWALK AND CONNECTING SIDEWALKS.
 BID ALTERNATE NO. 2 (BA-2): OVERLOOK DECK AND ASSOCIATED BENCHES.
 BID ALTERNATE NO. 3 (BA-3): CUSTOM ICON NO. 1.
 BID ALTERNATE NO. 4 (BA-4): CUSTOM ICON NO. 2.
 BID ALTERNATE NO. 5 (BA-5): CXT RESTROOM, 20' DIA' PAVILION, AND ASSOCIATED PICNIC TABLES, AND TRASH RECEPTACLE AT PICKLEBALL COURTS.
 BID ALTERNATE NO. 6 (BA-6): CONCRETE SIDEWALK, PICKLEBALL SHADE CANOPIES, AND ASSOCIATED PICNIC TABLES, AND TRASH RECEPTACLE AT PICKLEBALL COURTS.
 BID ALTERNATE NO. 7 (BA-7): 20' DIA.' PAVILION, CONCRETE SIDEWALK, ASSOCIATED PICNIC TABLES, AND TRASH RECEPTACLE.
 BID ALTERNATE NO. 8 (BA-8): PICNIC TABLE AND ASSOCIATED CONCRETE PAD AT OPEN CHANNEL WATER FEATURE.
 BID ALTERNATE NO. 9 (BA-9): ONE BENCH AT CORNHOLE AREA.
 BID ALTERNATE NO. 10 (BA-10): TWO 30' DIA. PAVILIONS, CONCRETE SIDEWALK, ASSOCIATED PICNIC TABLES, AND TRASH RECEPTACLES.
 BID ALTERNATE NO. 11 (BA-11): ADDITIONAL CLIMBING BOULDER IN BOULDERING AREA (SEE LS401).
 BID ALTERNATE NO. 12 (BA-12): PARK ENTRY SIGN
 BID ALTERNATE NO. 13 (BA-13): PARK SIGNAGE PER OVERALL SIGN PLAN (LS102)

BID ALTERNATE NOTES:
 1. INDIVIDUAL BID ALTERNATES SHALL INCLUDE ALL WORK REQUIRED FOR A COMPLETE INSTALLATION OF THAT BID ALTERNATE INCLUDING ALL REQUIRED MATERIALS, GRADING, UTILITIES, LIGHTING, ETC.
 2. PROVIDING UTILITY SERVICE TO THE VICINITY OF A BID ALTERNATE FOR FUTURE CONNECTION SHALL BE PROVIDED IN THE BASE BID. FOR EXAMPLE, WATER AND SEWER STUBS TO THE CXT RESTROOM AT THE PICKLEBALL COURTS SHALL BE COVERED IN THE BASE BID AND NOT PART OF THAT BID ALTERNATE. SIMILARLY POWER STUBS/CONDUIT FOR LIGHTING ASSOCIATED WITH PAVILIONS THAT ARE BID ALTERNATES SHALL BE PART OF THE BASE BID, WHEREAS THE ACTUAL LIGHTING FOR THOSE PAVILIONS SHALL BE COVERED IN THE BID ALTERNATE.

CONSTRUCTION DOCUMENTS



blu line designs
 planning | landscape architecture | design
 8719 S. Sandy Parkway
 Sandy, UT 84070
 p 801.679.3157

OWNER:
 NIBLEY CITY
 455 W 3200 S,
 Nibley, UT 84321
 CONTACT:
 TOM DICKINSON
 PH: 435.727.5848

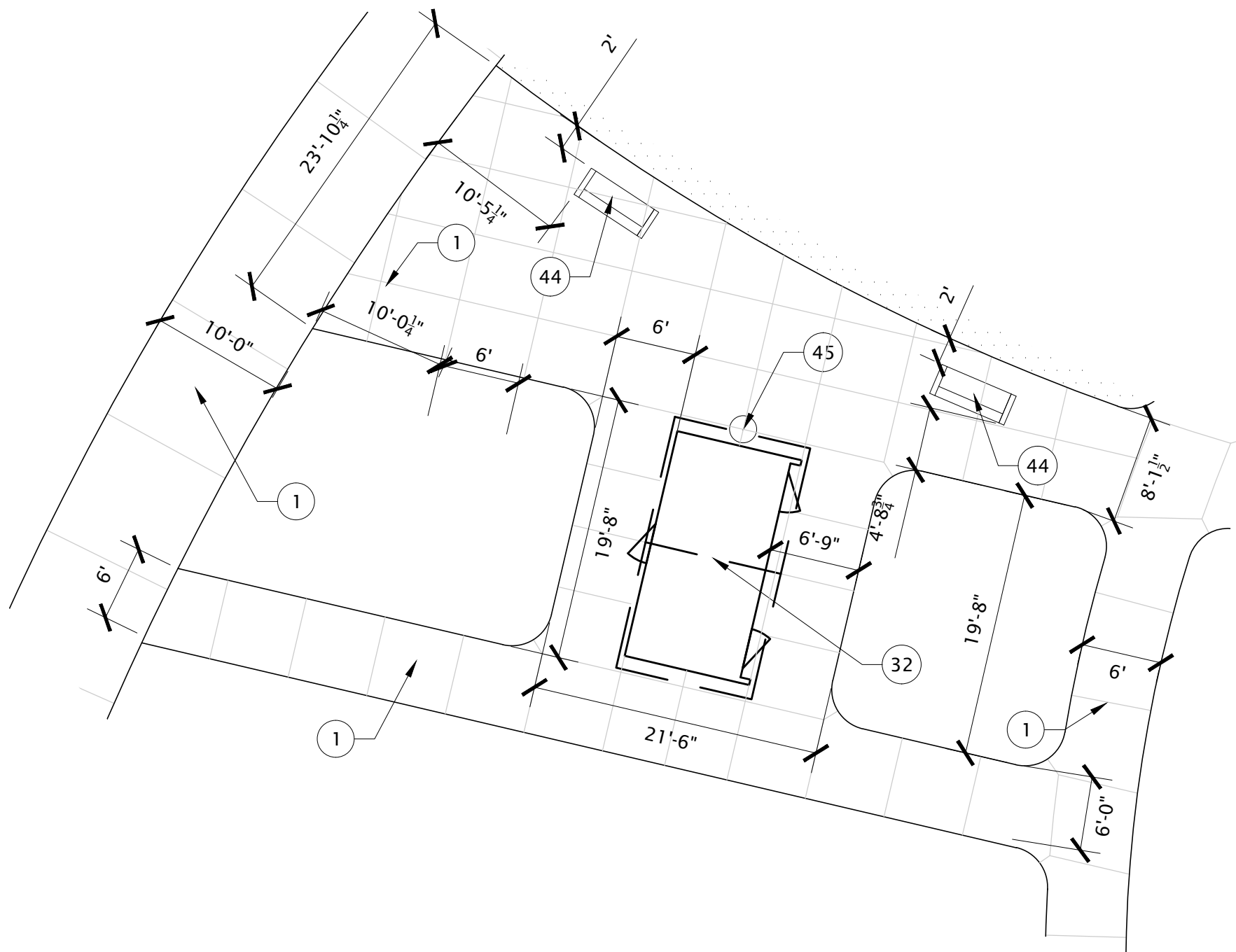


LEGEND

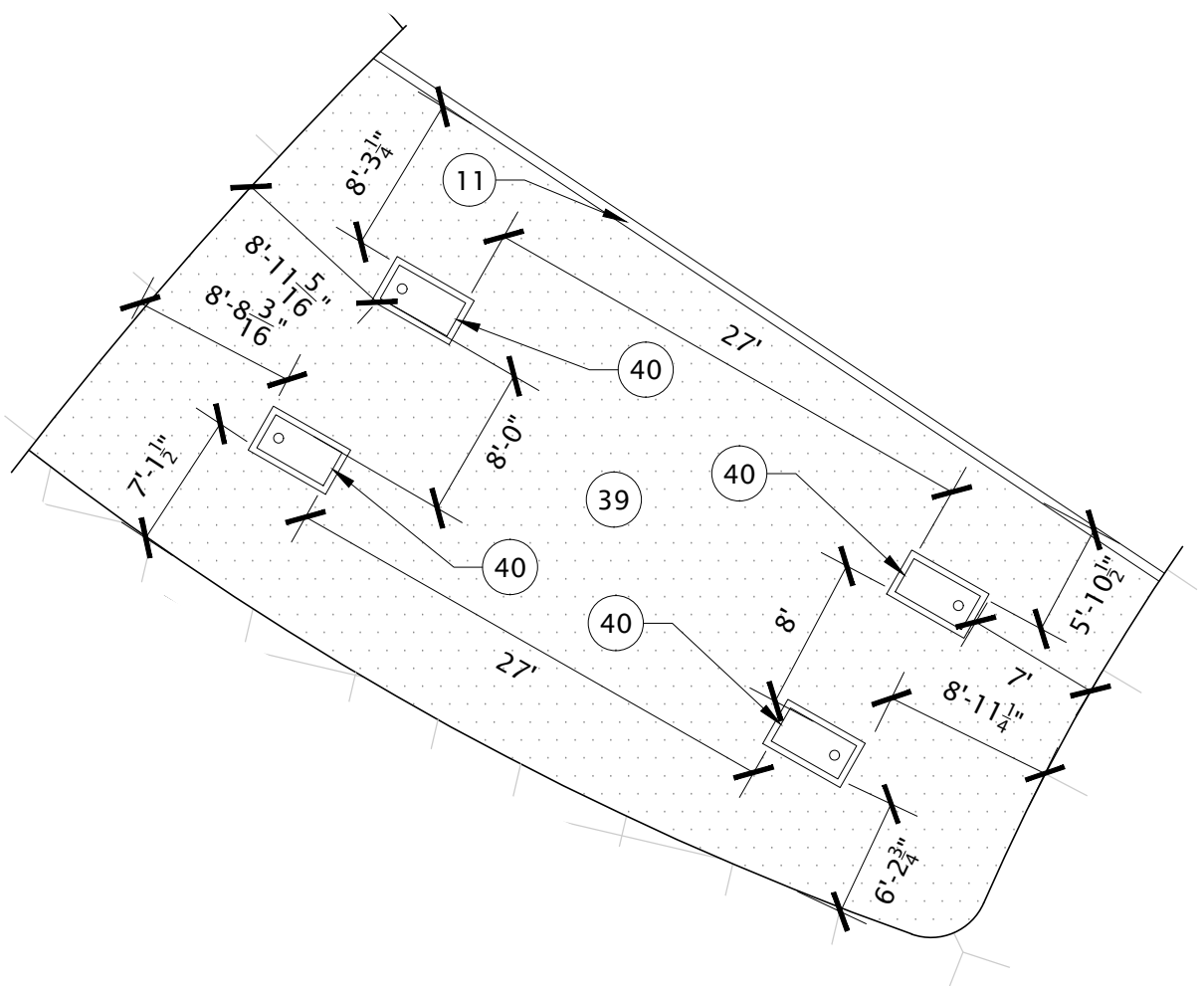
- PROPERTY BOUNDARY
- PHASE 1 CONSTRUCTION LIMIT LINE
- EXISTING WETLAND

REFERENCE NOTES SCHEDULE

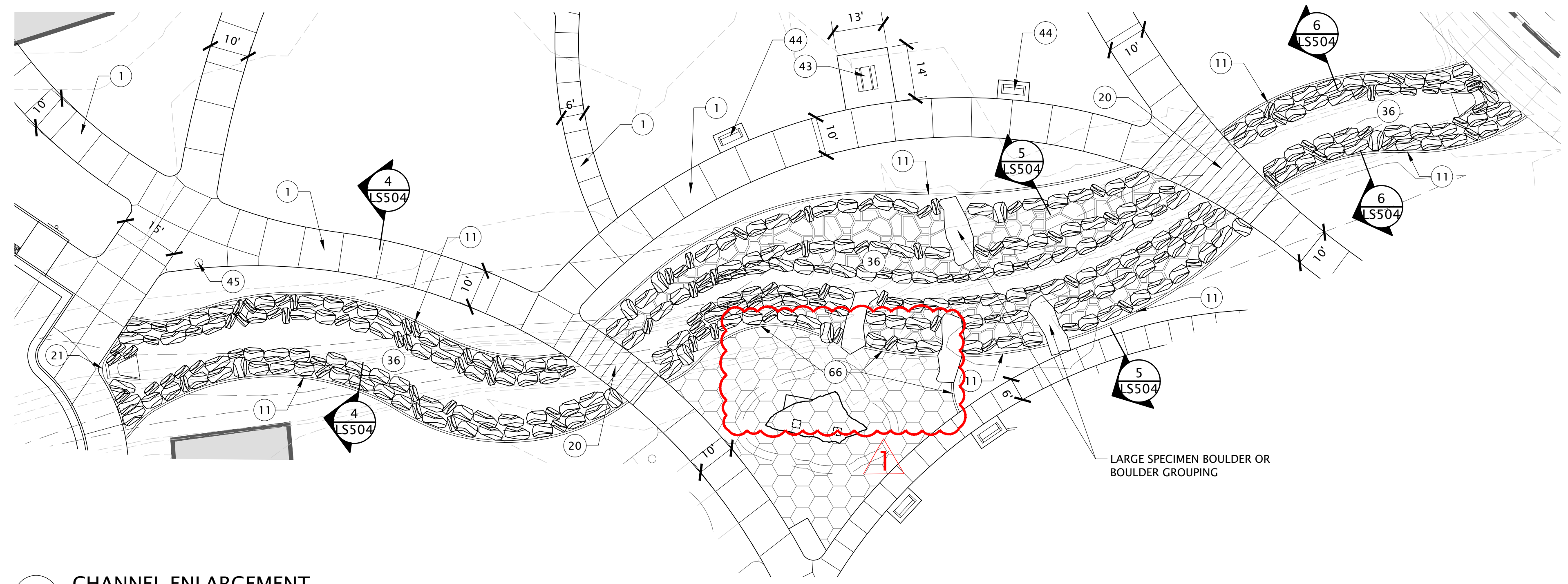
| SYMBOL | DESCRIPTION | DETAIL |
|--------|--|----------|
| 1 | CONCRETE SIDEWALK/PLAZA | 1/LS501 |
| 2 | CONCRETE PAVILION PAD | 1/LS501 |
| 3 | ASPHALT PARKING - SEE CIVIL DRAWINGS | |
| 4 | PARKING LOT STRIPING - SEE CIVIL DRAWINGS | |
| 5 | DRIVE APPROACH - SEE CIVIL DRAWINGS | |
| 6 | CURB AND GUTTER - SEE CIVIL DRAWINGS | |
| 7 | EXISTING CURB AND GUTTER TO REMAIN | |
| 8 | ADA RAMP - SEE CIVIL DRAWINGS | |
| 9 | ADA PARKING STALLS - SEE CIVIL DRAWINGS | |
| 10 | ADA PARKING SIGNS - SEE CIVIL DRAWINGS | |
| 11 | 6" CONCRETE EDGER | 2/LS501 |
| 12 | CONCRETE STAIRS | 3/LS501 |
| 13 | LINEAR STONE SITTING WALL | 4/LS501 |
| 14 | THICKENED CONCRETE EDGE | 5/LS501 |
| 15 | ADA PLAYGROUND RAMP | 7/LS501 |
| 16 | PLAYGROUND - SEE LS403 | |
| 17 | ENGINEERED WOOD FIBER | |
| 18 | WETLAND BOARDWALK | 9/LS501 |
| 19 | OVERLOOK DECK | 9/LS501 |
| 20 | PEDESTRIAN BRIDGE | 9/LS501 |
| 21 | 3 RAIL FENCE | 1/LS502 |
| 22 | PICKLEBALL COURT - SEE ENLARGEMENTS 1-2- LS402 | |
| 23 | PICKLEBALL COURT STRIPING | |
| 24 | PICKLEBALL COURT PERIMETER FENCE - 6" TALL | 2/LS502 |
| 25 | PICKLEBALL MAN-GATES - 6" TALL | 3/LS502 |
| 26 | PICKLEBALL COURT INTERIOR FENCE - 4" TALL | 4/LS502 |
| 27 | PICKLEBALL NET AND POSTS | 5/LS502 |
| 28 | PICKLEBALL MAINTENANCE GATE | 6/LS502 |
| 29 | ICONIC FEATURE 1 | 9/LS503 |
| 30 | ICONIC FEATURE 2 | 10/LS503 |
| 31 | PARK ENTRY SIGN | 1/LS504 |
| 32 | CORTEZ CXT RESTROOM - SEE LS505 | |
| 33 | 20' DIA. PAVILION | 7/LS503 |
| 34 | 20' DIA. PAVILION - BID ALTERNATE | 7/LS503 |
| 35 | 30' DIA. PAVILION - BID ALTERNATE | 7/LS503 |
| 36 | OPEN CHANNEL WATER FEATURE - SEE SECTIONS- LS505 | |
| 37 | BOULDERING AREA - SEE LS401 | |
| 38 | CLIMBING BOULDER - SEE LS401 | |
| 39 | ARTIFICIAL TURF | 10/LS502 |
| 40 | CORN HOLE | 8/LS502 |
| 41 | 9 SQUARE | 9/LS502 |
| 42 | GAGA PIT | 1/LS503 |
| 43 | PICNIC TABLE | 6/LS503 |
| 44 | BENCH | 3/LS503 |
| 45 | TRASH RECEPTACLE | 5/LS503 |
| 46 | EXPANSION JOINT AT POST-TENSION CONCRETE SLAB | 7/LS502 |
| 64 | PICKLEBALL SHADE CANOPY | |
| 65 | ADA PICNIC TABLE | |
| 66 | PLAYGROUND CURB | 11/LS501 |
| SYMBOL | DESCRIPTION | DETAIL |
| | ENGINEERED WOOD FIBER | |
| | FLAGSTONE | 7/LS504 |



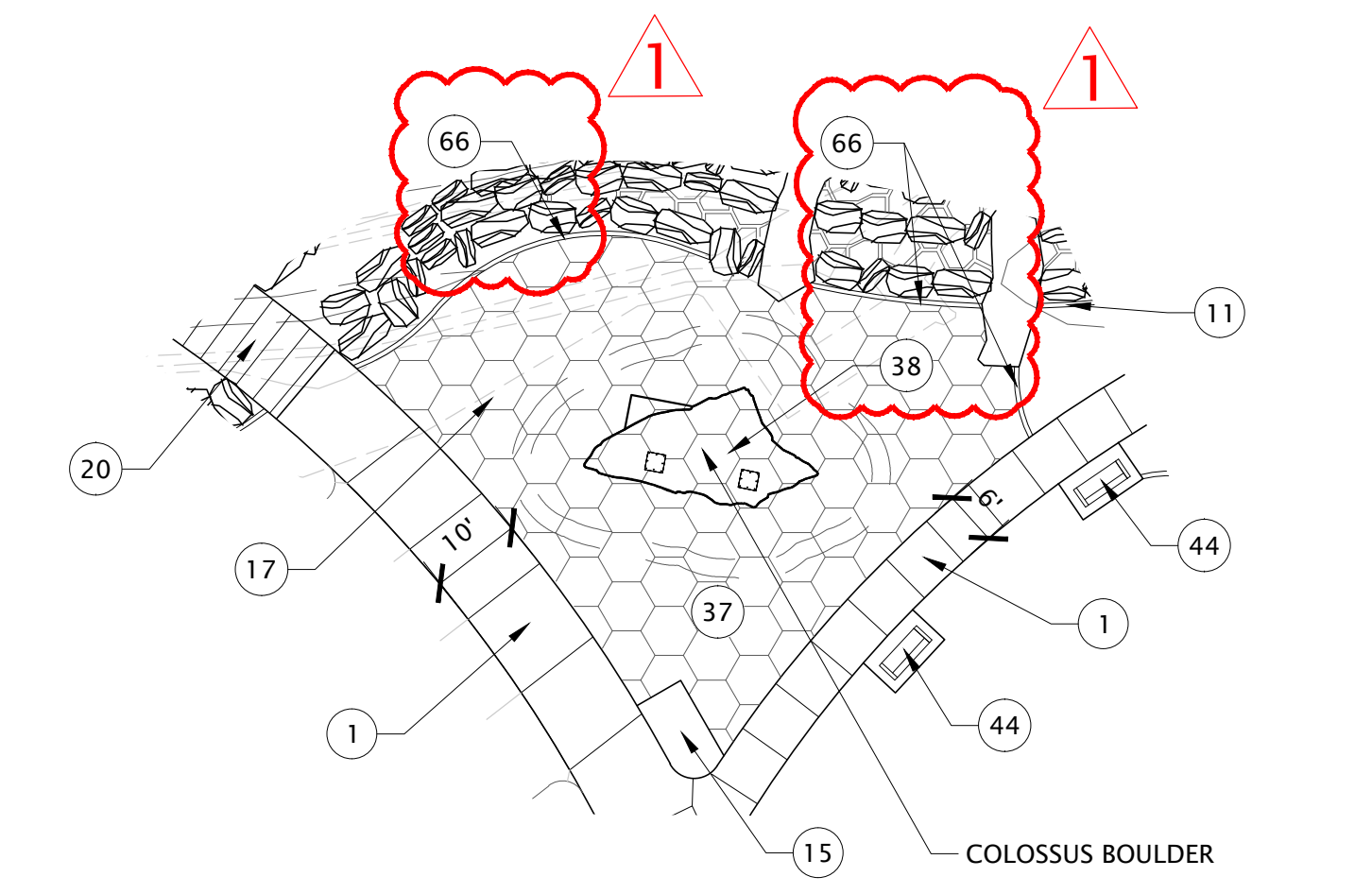
1 CXT CORTEZ RESTROOM ENLARGEMENT
 SCALE: 1"=10'-0"



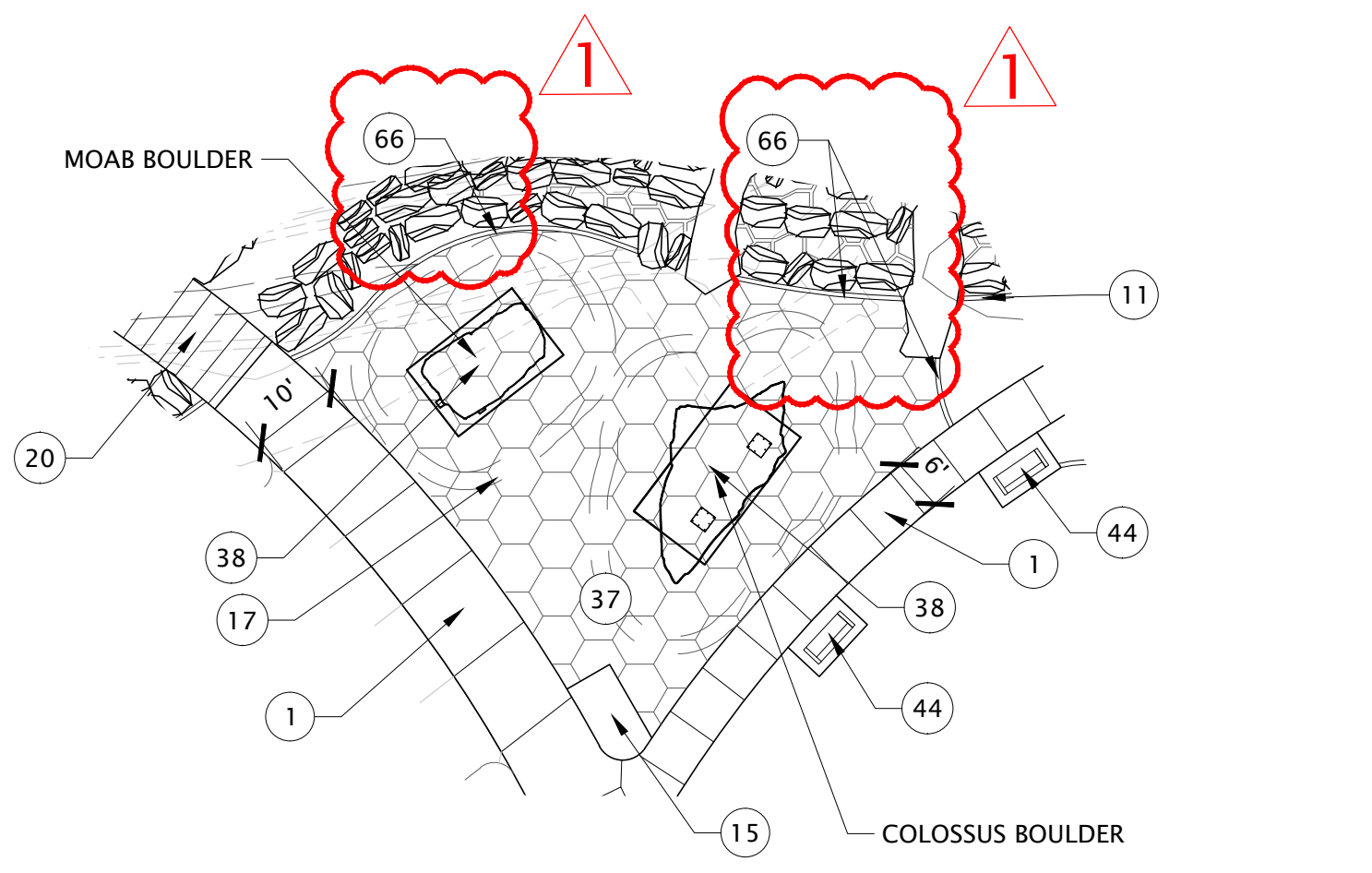
2 CORNHOLE ENLARGEMENT
 SCALE: 1"=10'-0"



3 CHANNEL ENLARGEMENT
 SCALE: 1"=20'-0"



4 BOULDERING AREA ENLARGEMENT - BASE BID
 SCALE: 1"=20'-0"



5 BOULDERING AREA ENLARGEMENT - BID ALTERNATE
 SCALE: 1"=20'-0"

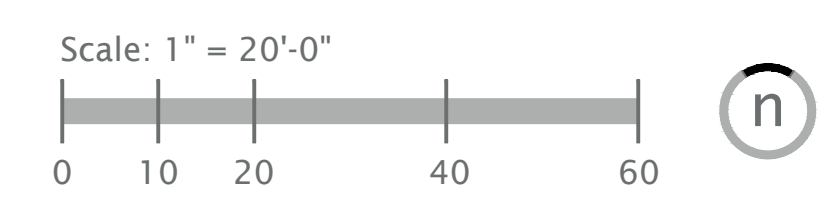
NOTES:
 1. CONTRACTOR SHALL INSTALL 6" WASHED GRAVEL DRAINAGE LAYER AFTER BOULDERS ARE INSTALLED. ENGINEERED WOOD FIBER SURFACING TO BE PROVIDED AND INSTALLED BY OTHERS WITH 1.
 2. CLIMBING BOULDERS TO BE PROVIDED AND INSTALLED BY CONTRACTOR. BOULDERS TO HAVE COLORINGS THAT MATCH THE COLOR AND STYLE OF LOCAL ROCKS.
 3. BOULDERS TO HAVE COLORINGS THAT MATCH THE COLOR AND STYLE OF LOCAL ROCKS.
 4. CITY TO APPROVE SAMPLES OF COLORINGS BEFORE INSTALLATION.
 5. INSTALL PER MANUFACTURER'S INSTRUCTIONS.



COLOSSUS BOULDER

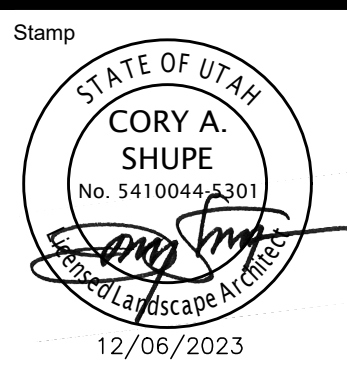


MOAB BOULDER



RIDGELINE PARK | PHASE 1
 401 W EST ROPELATO DRIVE
 NIBLEY, UT 84321

| REVISIONS | |
|-----------|-------------|
| NO. | DESCRIPTION |
| 1 | ISSUE |

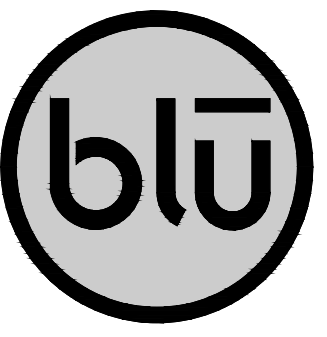


Designed By: RD
 Drawn By: TH
 Date: 12/06/2023
 Checked By: CS
 Project No: 22-209

Drawing Title
 SITE PLAN ENLARGEMENT

Drawing number
 LS401

CONSTRUCTION DOCUMENTS

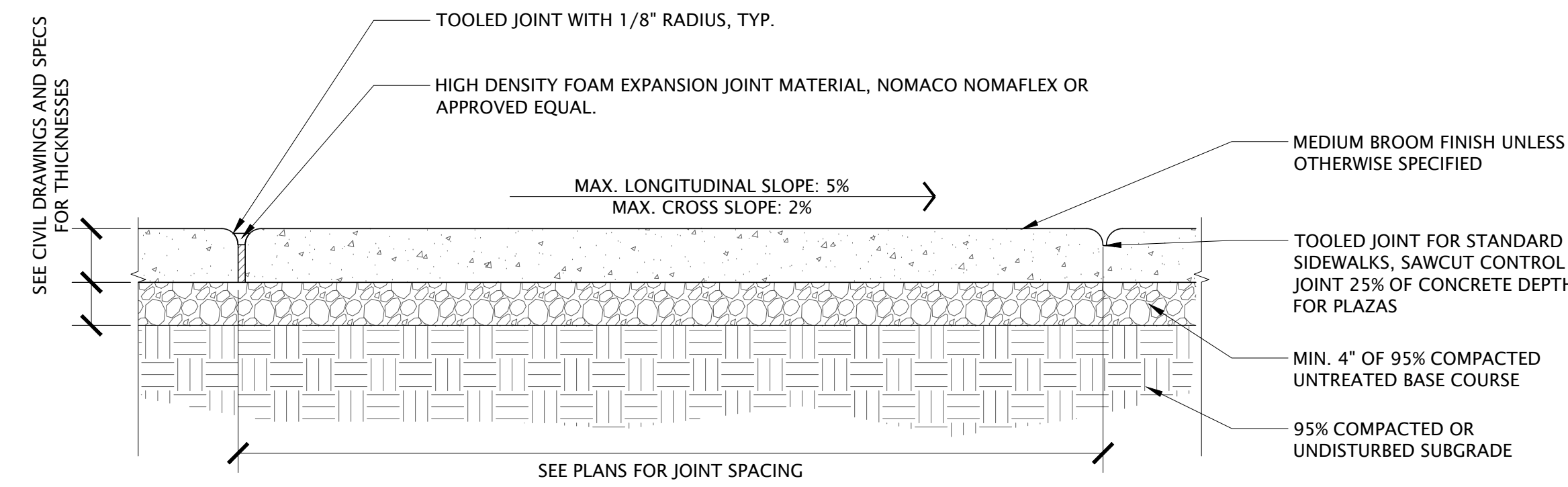


blu line designs
planning | landscape architecture | design

8719 S. Sandy Parkway
Sandy, UT 84070
p 801.679.3157

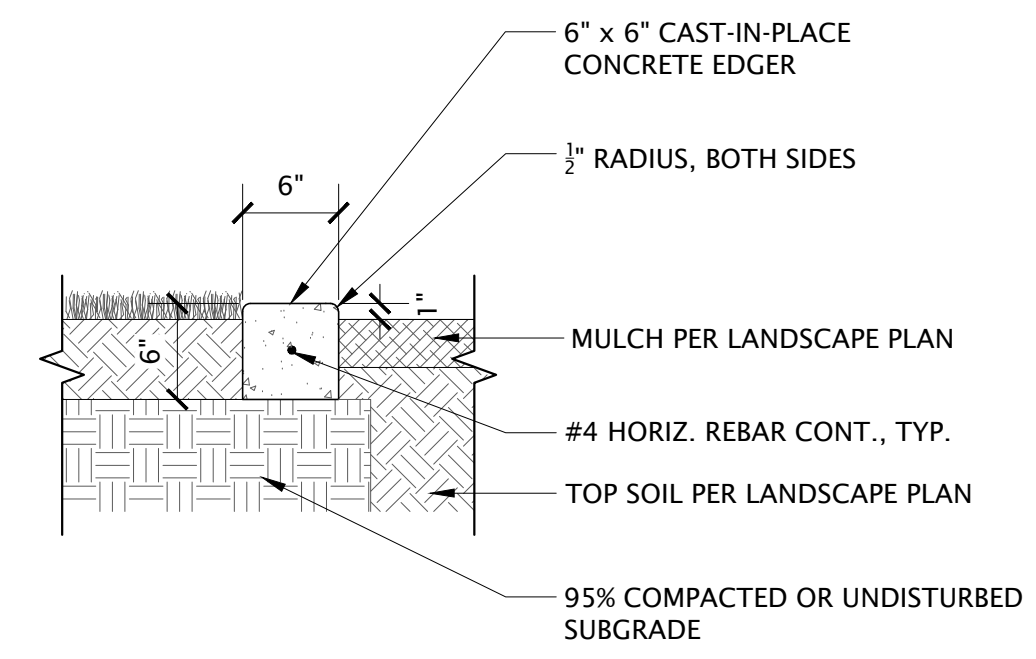
OWNER:
NIBLEY CITY
455 W 3200 S,
Nibley, UT 84321

CONTACT:
TOM DICKINSON
PH: 435.737.8848

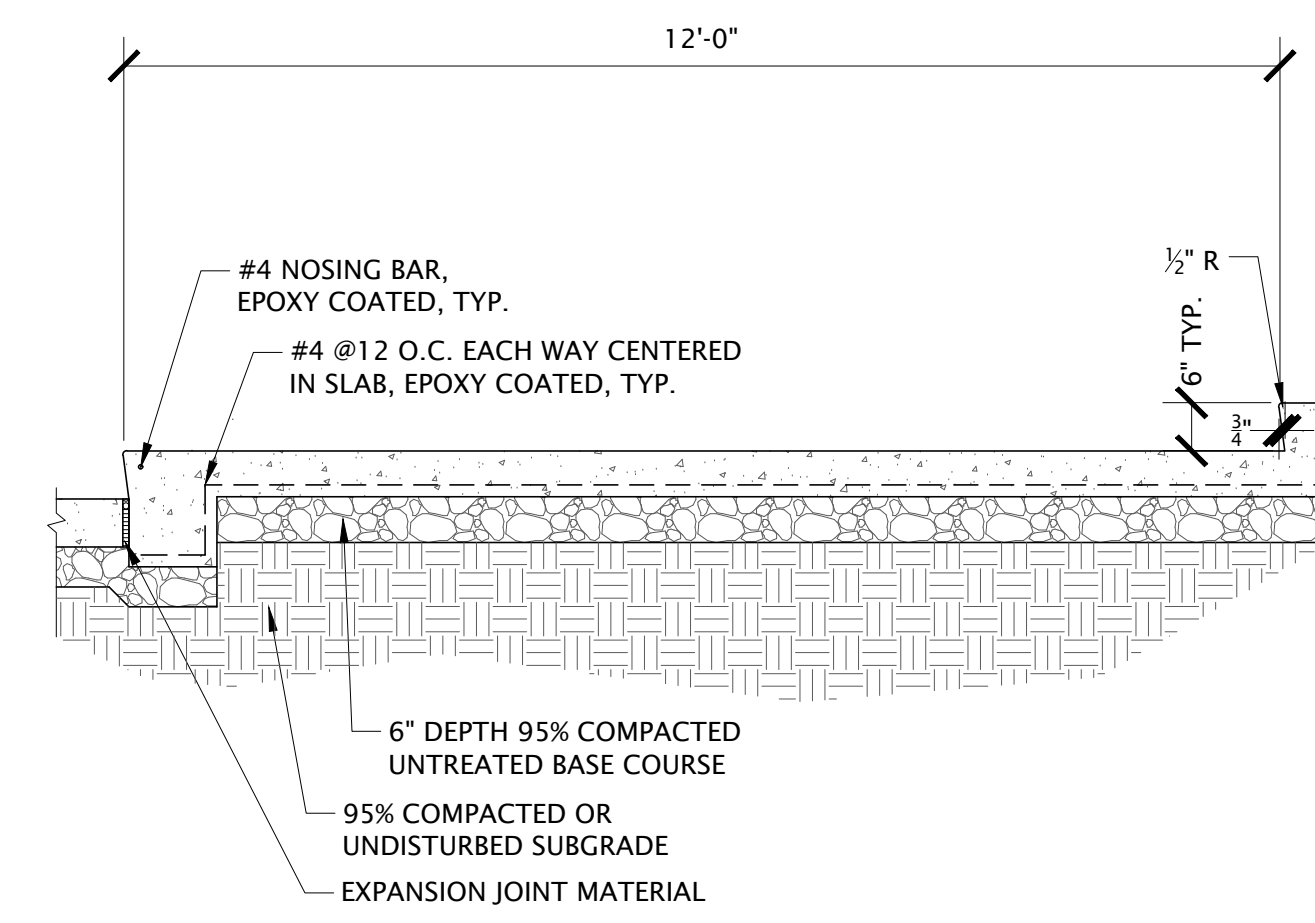


- NOTES:
- JOINT SPACING TO BE AS SHOWN IN SCHEDULE UNLESS OTHERWISE INDICATED ON PLANS.
 - MAX. SLOPES TO BE PER DETAIL UNLESS OTHERWISE SHOWN ON PLAN.
 - IF CONCRETE IS TO BE POURED NEXT TO A CURB, #4 REBAR TO BE DOWELED 3" INTO CURB AND 4" INTO ADJACENT CONCRETE. REBAR TO BE DOWELED A MINIMUM OF 2" FROM TOP OF CONCRETE AND CURB 24" O.C.
 - TREAT CONCRETE WITH CURING AGENT AND SEAL ONCE CURED.
 - CONTROL JOINTS FOR STANDARD CONCRETE MAY BE 1/8" TOOLED JOINTS OR SAWCUT AS APPROVED BY OWNER.
 - CONCRETE WALK INTERSECTIONS SHALL BE POURED MONOLITHICALLY WITH RADIUS TRANSITIONS PER PLAN.

| JOINT SPACING SCHEDULE | | |
|------------------------|---------------|-------------|
| WALK WIDTH | EXPANSION JT. | CONTROL JT. |
| 10' | 100' O.C. | 10' O.C. |
| 8' | 100' O.C. | 8' O.C. |
| 6' | 100' O.C. | 6' O.C. |
| 5' | 100' O.C. | 5' O.C. |



- NOTES:
- EDGER TO BE FLUSH WITH ADJACENT WALK, PATH, PAVEMENT OR CURB.
 - ALL LAYOUT AND FORM WORK TO BE APPROVED BY OWNER PRIOR TO PLACING CONCRETE.
 - CONCRETE TO MEET ALL CITY SPECIFICATIONS.
 - PLACE EXPANSION JOINTS @ 30' O.C., CONTROL JOINTS @ 10' O.C. UNLESS OTHERWISE SHOWN ON PLAN.
 - ALL CURVES IN EDGER TO BE TANGENT TO EACH OTHER AND STRAIGHT SECTIONS OF CURB.
 - CONCRETE EDGER TO BE FORMED AND CAST IN PLACE, NOT PRE-CAST OR EXTRUDED.



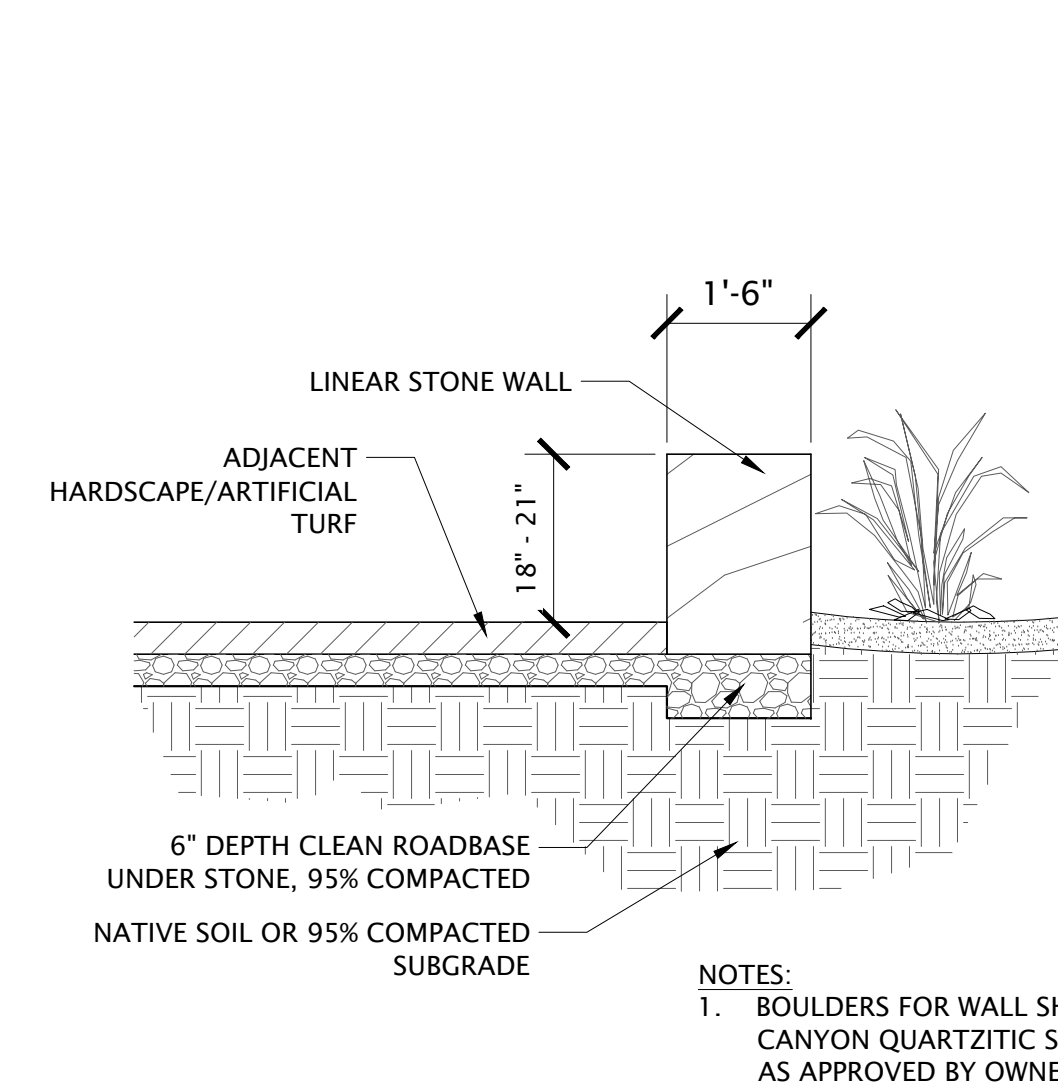
1 CONCRETE SIDEWALK/PLAZA
SCALE: NOT TO SCALE

P-22-209-21

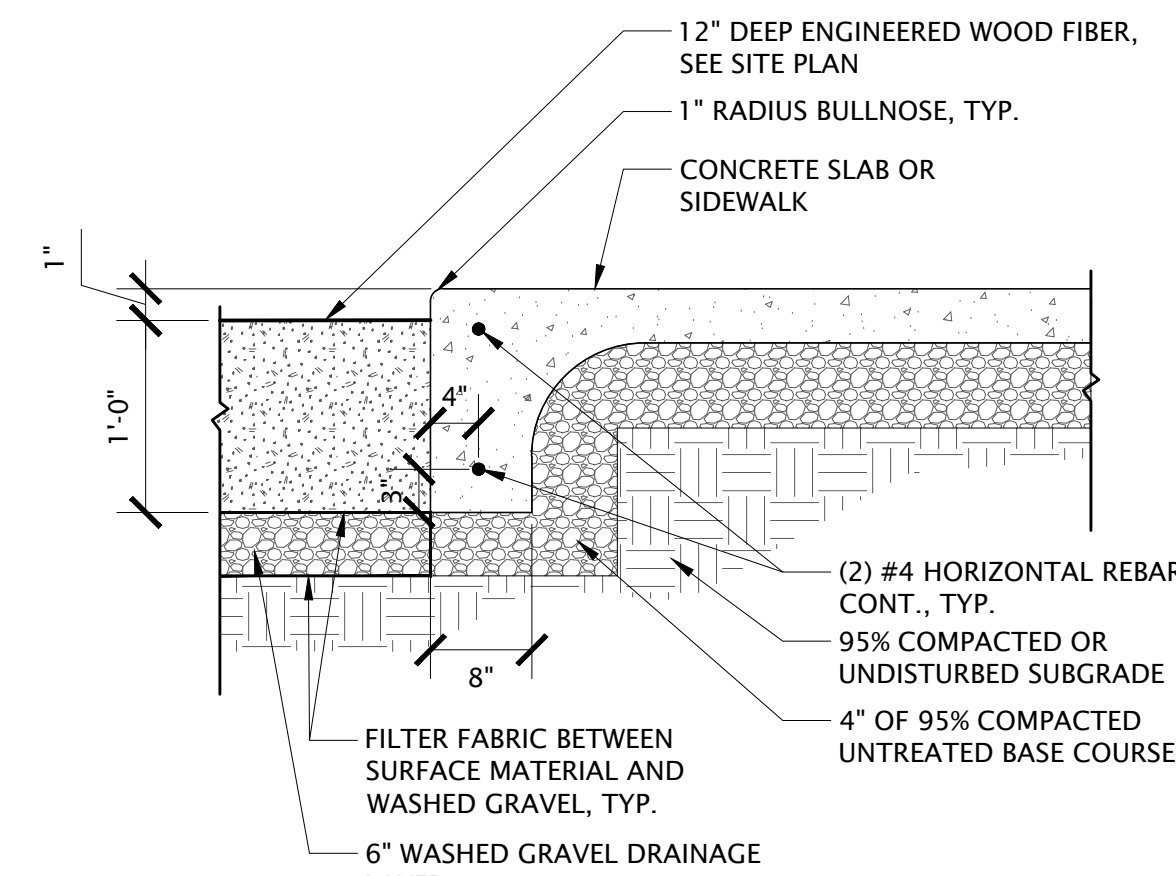
2 6" CONCRETE EDGER
NOT TO SCALE

3 CONCRETE STAIR TYP.
1/2" = 1'-0"

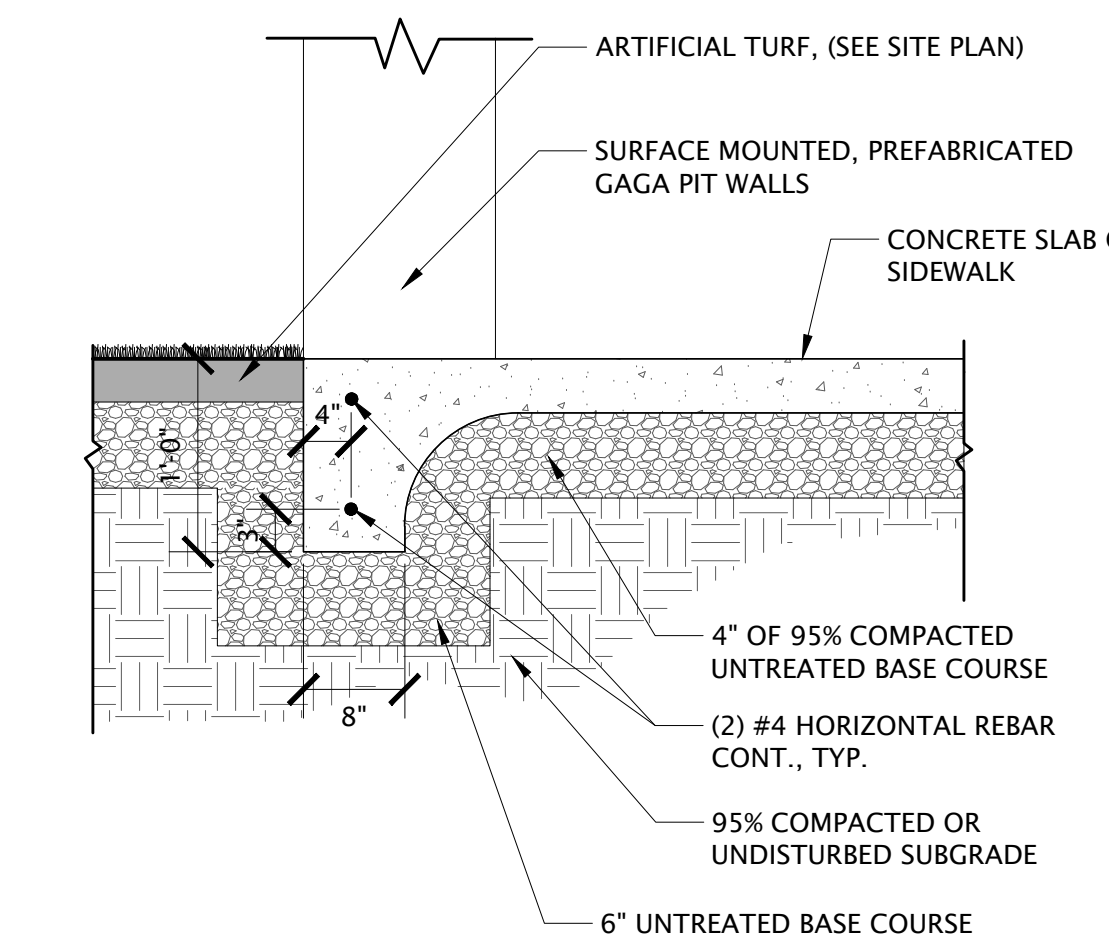
P-22-209-114



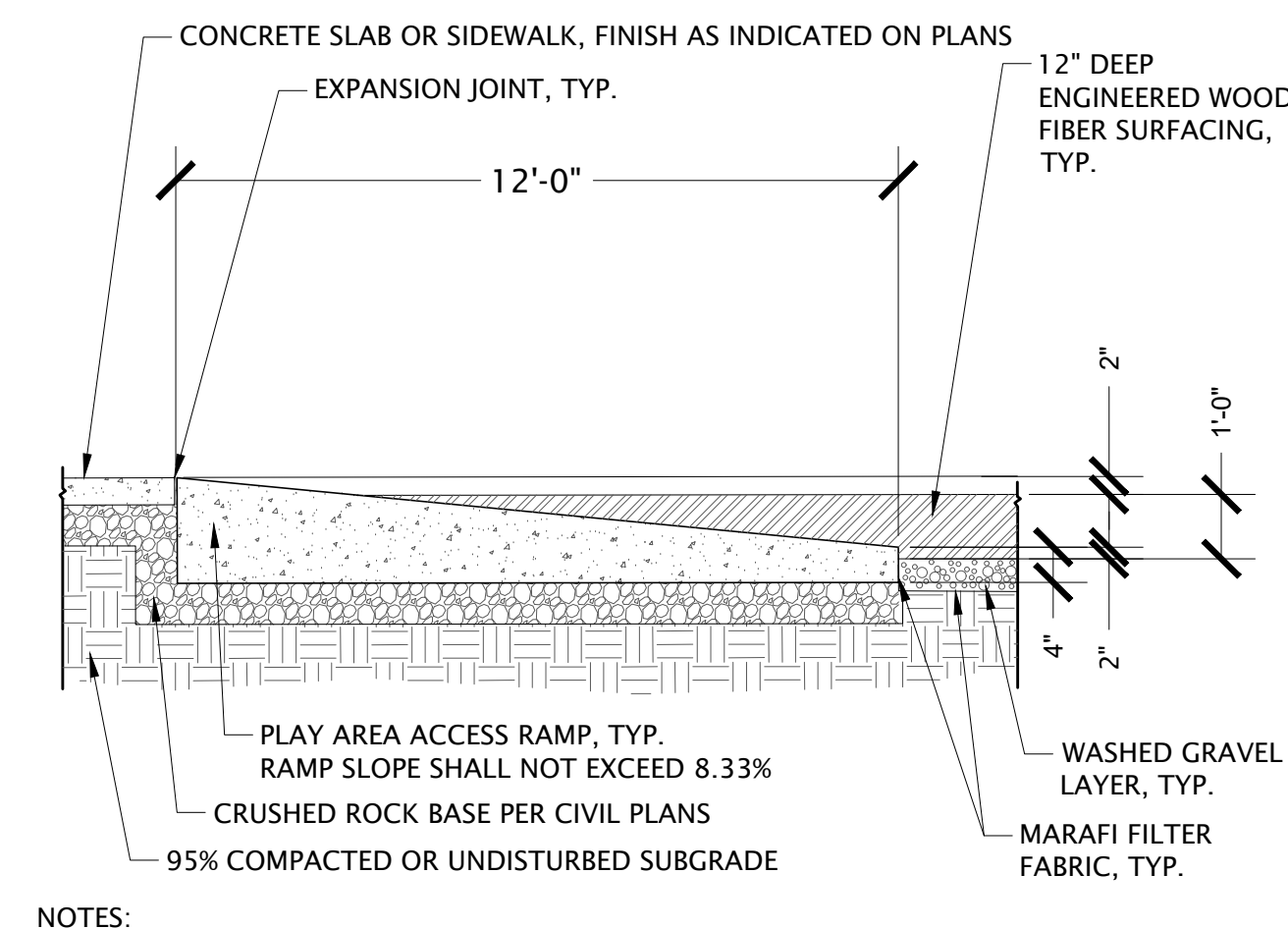
- NOTES:
- BOULDERS FOR WALL SHALL BE BROWNS CANYON QUARTZITIC SANDSTONE OR EQUAL AS APPROVED BY OWNER.



- NOTES:
- CONCRETE SHALL MEET ALL CITY AND APWA SPECIFICATIONS.
 - PLACE EXPANSION JOINTS @ 30' O.C., CONTROL JOINTS @ 10' O.C. UNLESS OTHERWISE SHOWN ON PLAN.



- NOTES:
- CONCRETE SHALL MEET ALL CITY AND APWA SPECIFICATIONS.
 - PLACE EXPANSION JOINTS @ 30' O.C., CONTROL JOINTS @ 10' O.C. UNLESS OTHERWISE SHOWN ON PLAN.



- NOTES:
- ACCESS RAMPS TO BE LOCATED IN FIELD BY OWNER'S REPRESENTATIVE BASED ON PLAY EQUIPMENT LAYOUT - ONE PER PLAY POD.
 - NECESSARY DEPTH OF ENGINEER WOOD FIBER SURFACING SHALL BE VERIFIED WITH PLAYGROUND EQUIPMENT SUPPLIER.
 - ENGINEERED WOOD FIBER TO BE PROVIDED AND INSTALLED BY OTHERS (N.I.C.). CONTRACTOR TO INSTALL CONCRETE PLAYGROUND RAMP.

4 LINEAR STONE SITTING WALL
NOT TO SCALE

5 THICKENED CONCRETE EDGE AT PLAYGROUND
1" = 1'-0"

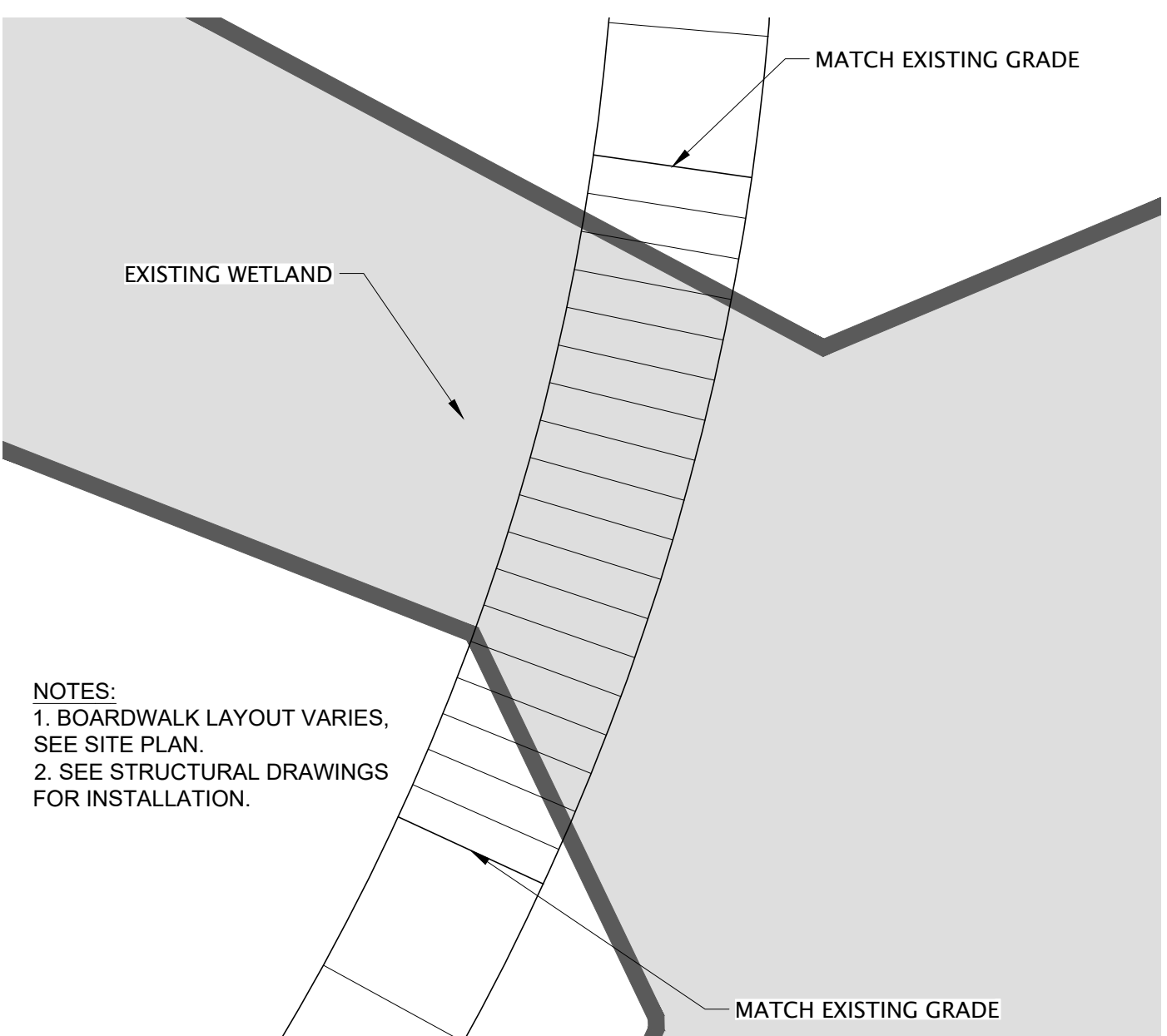
P-22-209-60

6 THICKENED CONCRETE EDGE AT GAGA PIT
1" = 1'-0"

P-22-209-48

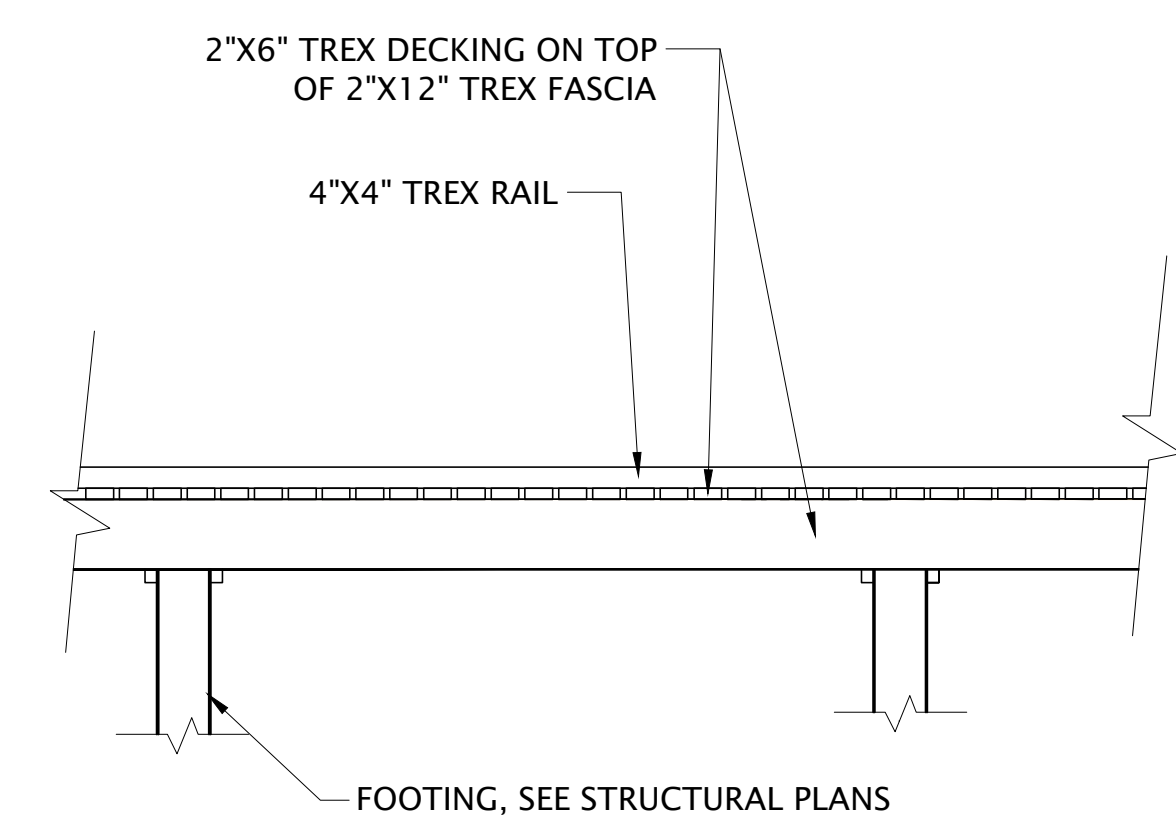
7 PLAYGROUND RAMP
SCALE: NOT TO SCALE

P-22-209-113



- NOTES:
- BOARDWALK LAYOUT VARIES. SEE SITE PLAN.
 - SEE STRUCTURAL DRAWINGS FOR INSTALLATION.

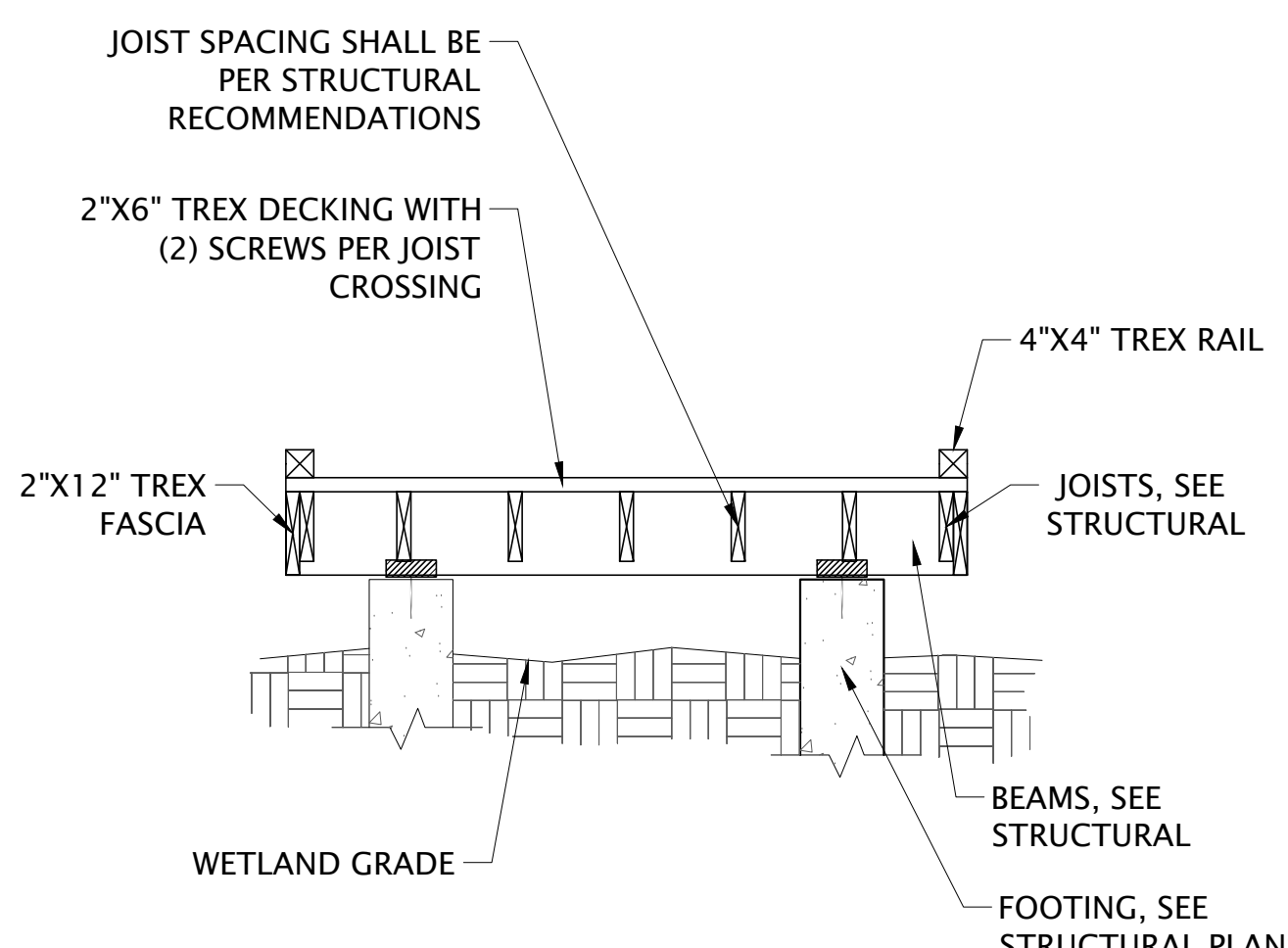
8 TYPICAL WETLAND BOARDWALK ENLARGEMENT
SCALE: 1" = 10'-0"



- NOTES:
- DETAIL SHOWS AESTHETIC CHOICES FOR BOARDWALK. SEE STRUCTURAL PLANS FOR INSTALLATION.
 - COLOR OF TREX DECKING SHALL BE "SADDLE."

9 BOARDWALK PROFILE DETAIL
SCALE: NOT TO SCALE

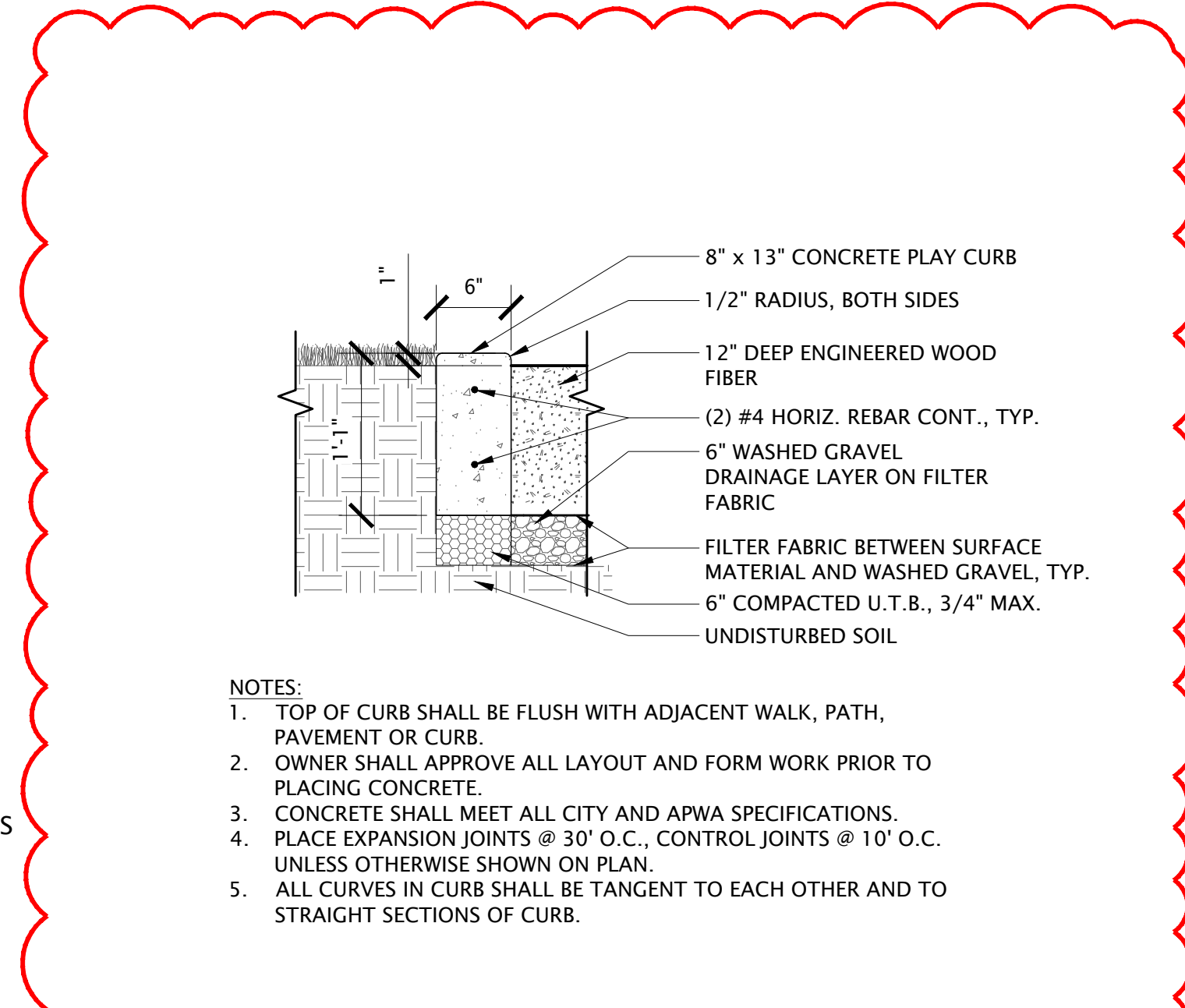
P-22-209-103



- NOTES:
- DETAIL SHOWS AESTHETIC CHOICES FOR BOARDWALK. SEE STRUCTURAL PLANS FOR INSTALLATION.
 - COLOR OF TREX DECKING SHALL BE "SADDLE."

10 BOARDWALK SECTION DETAIL
SCALE: NOT TO SCALE

P-22-209-104



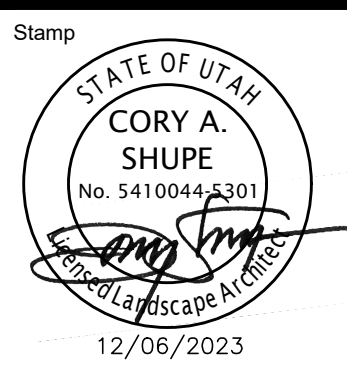
- NOTES:
- TOP OF CURB SHALL BE FLUSH WITH ADJACENT WALK, PATH, PAVEMENT OR CURB.
 - OWNER SHALL APPROVE ALL LAYOUT AND FORM WORK PRIOR TO PLACING CONCRETE.
 - CONCRETE SHALL MEET ALL CITY AND APWA SPECIFICATIONS.
 - PLACE EXPANSION JOINTS @ 30' O.C., CONTROL JOINTS @ 10' O.C. UNLESS OTHERWISE SHOWN ON PLAN.
 - ALL CURVES IN CURB SHALL BE TANGENT TO EACH OTHER AND TO STRAIGHT SECTIONS OF CURB.

11 PLAYGROUND CURBING
1" = 1'-0"

P-22-209-64

RIDGELINE PARK | PHASE 1
401 W EST ROPELATO DRIVE
NIBLEY, UT 84321

| REVISIONS | |
|-----------|--------------------|
| NO. | DESCRIPTION |
| 1 | ISSUED FOR PERMITS |

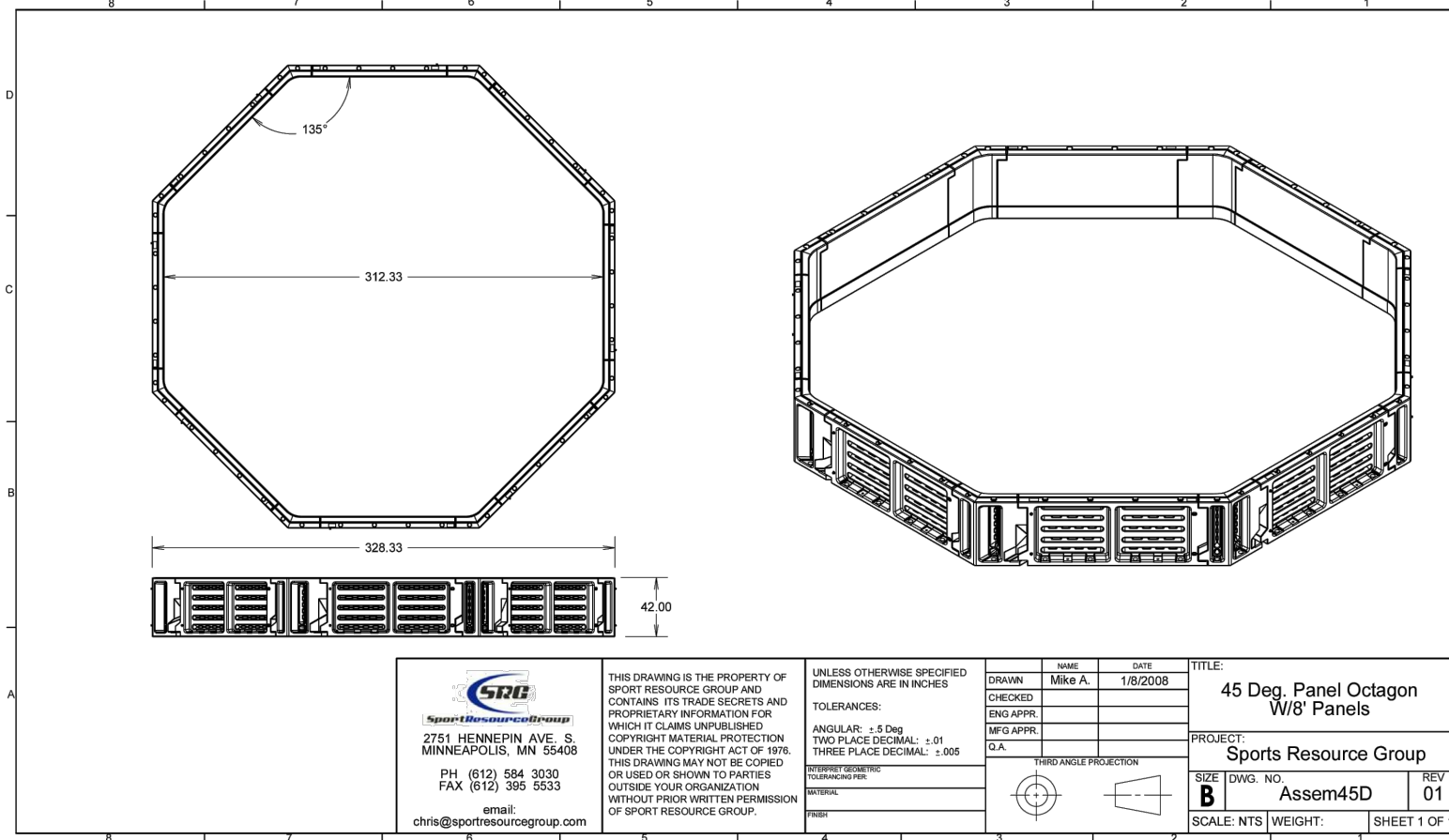


Designed By: RD
Drawn By: TH
Date: 12/06/2023
Checked By: CS
Project No: 22-209

Drawing Title
SITE PLAN
DETAILS

Drawing number
LS501

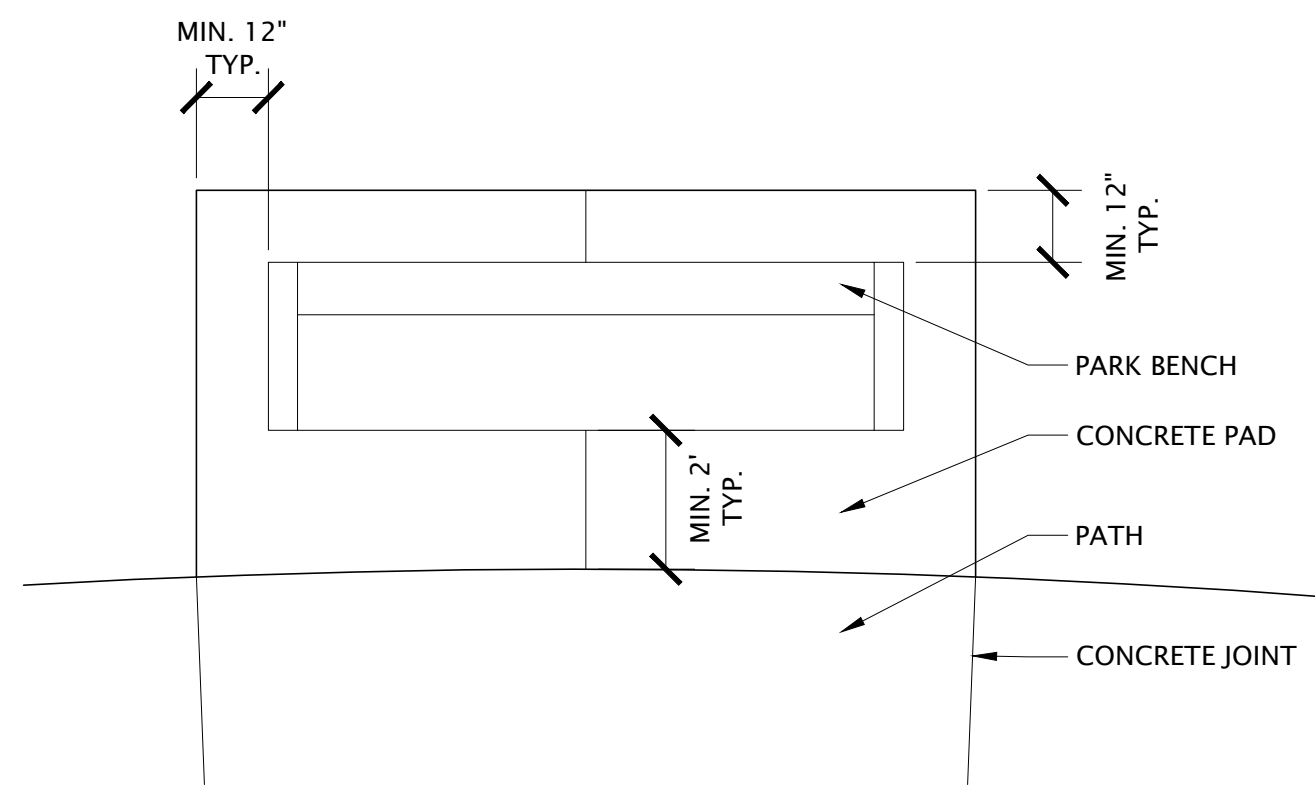
CONSTRUCTION DOCUMENTS



NOTES:
 1. ASSEMBLE PER MANUFACTURER INSTRUCTIONS.
 2. SURFACE MOUNT TO CONCRETE.

1 GAGA PIT ASSEMBLY
 3/32" = 1'-0"

P-22-209-105



NOTES:
 1. EXACT BENCH DIMENSIONS VARY BASED ON SELECTED PRODUCT. ADJUST SIZE OF BENCH PAD AS NECESSARY TO MEET MINIMUM OFFSET REQUIREMENTS.
 2. INSTALL BENCH PER MANUFACTURER'S RECOMMENDATIONS.
 3. BENCH PADS ADJACENT TO PLAYGROUND CURB SHALL HAVE A 1.5' MINIMUM OFFSET AT THE FRONT OF THE PAD.
 4. SEE SPECIFICATIONS FOR BENCH MODEL AND MANUFACTURER.

2 BENCH PAD
 NOT TO SCALE

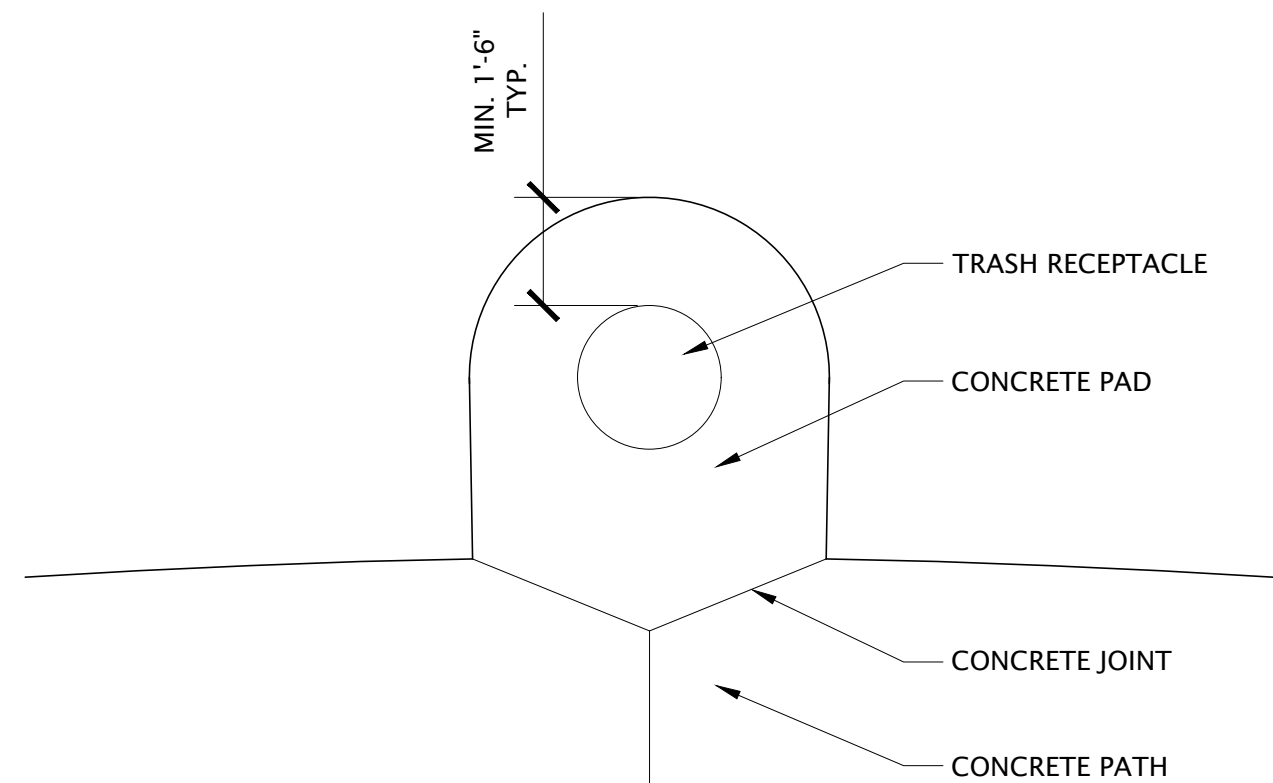
P-22-209-06



MANUFACTURER: SMITH STEELWORKS
 MODEL: CLASSIC BENCH
 DESCRIPTION: 6' BENCH WITH BACK & ARMS, VERTICAL SLAT, SURFACE MOUNT. POTENTIAL LOGO INTEGRATION.
 COLOR: CORTEN POWDERCOAT

3 PARK BENCH
 NTS

P-22-209-69



NOTES:
 1. TRASH RECEPTACLE SIZE MAY VARY BASED ON SELECTED PRODUCT. ADJUST SIZE OF PAD AS NECESSARY TO MEET MINIMUM OFFSET REQUIREMENTS.
 2. INSTALL TRASH RECEPTACLE PER MANUFACTURER'S RECOMMENDATIONS.
 3. POUR CONCRETE PAD MONOLITHICALLY WITH ADJACENT CONCRETE PATH.
 4. SEE SPECIFICATIONS FOR TRASH RECEPTACLE MODEL AND MANUFACTURER.



MANUFACTURER: SMITH STEELWORKS
 MODEL: CLASSIC FLARE TRASH RECEPTACLE
 DESCRIPTION: 32 GALLON RECEPTACLE, SLAT WITH LINER, SURFACE MOUNT.
 COLOR: CORTEN POWDERCOAT.

4 TRASH RECEPTACLE PAD
 NOT TO SCALE

P-22-209-22

5 TRASH RECEPTACLE
 NTS

P-22-209-26

6 PICNIC TABLE
 SCALE: NOT TO SCALE

P-22-209-52



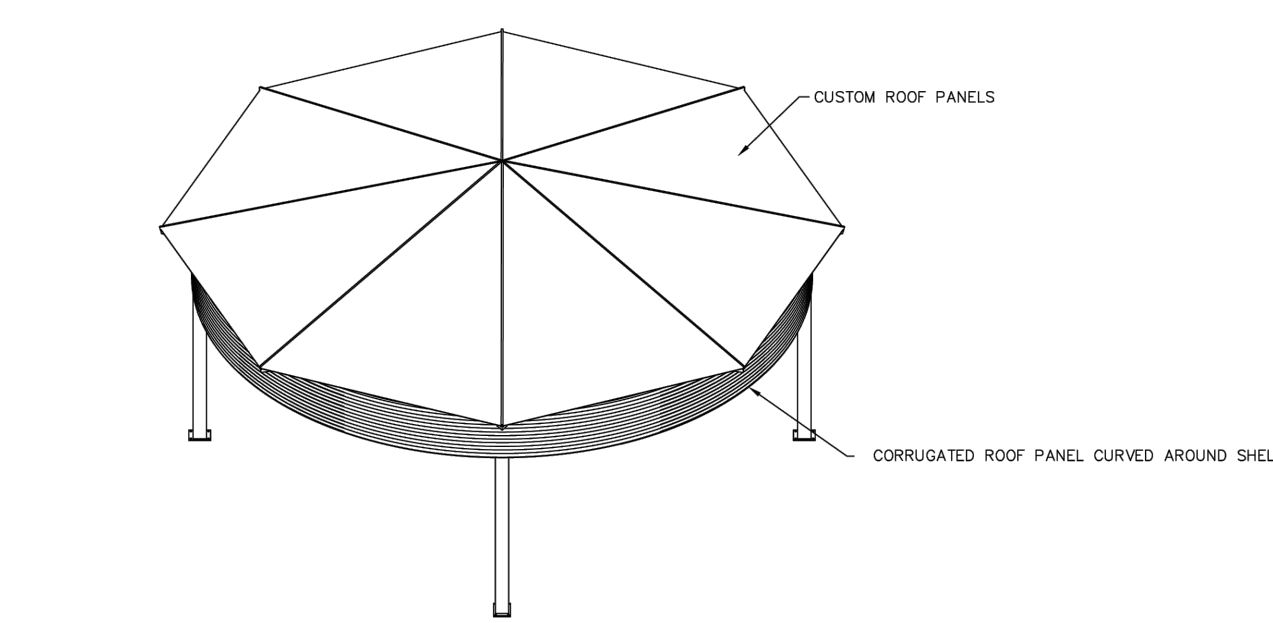
NOTES:
 1. PICNIC TABLE SHALL BE 6' QUALITY SITE FURNITURE'S CLASSIC PICNIC TABLE WITH SLATS OR APPROVED EQUAL. COLOR: CORTEN POWDERCOAT.
 2. CONTRACTOR SHALL SUBMIT CUT SHEET AND COLOR SAMPLE FOR OWNER REVIEW AND APPROVAL PRIOR TO ORDER AND INSTALLATION.

7 PAVILION, TYP.
 NTS

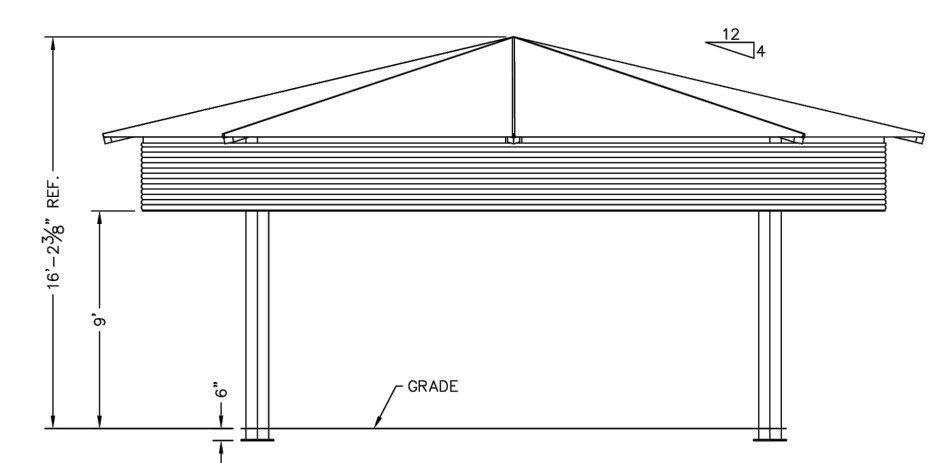


PAVILIONS TO BE PROVIDED BY BIG T RECREATION. PAVILIONS TO BE 20' OR 30' IN DIAMETER. SEE SITE PLAN FOR SIZES AND LOCATIONS.

CONTACT: BIG T RECREATION
 TAFT EGAN
 PH: 801.572.0782
 TAFT@BIGTREC.COM



8 PAVILION PLANS EXCERPT
 SCALE: NOT TO SCALE

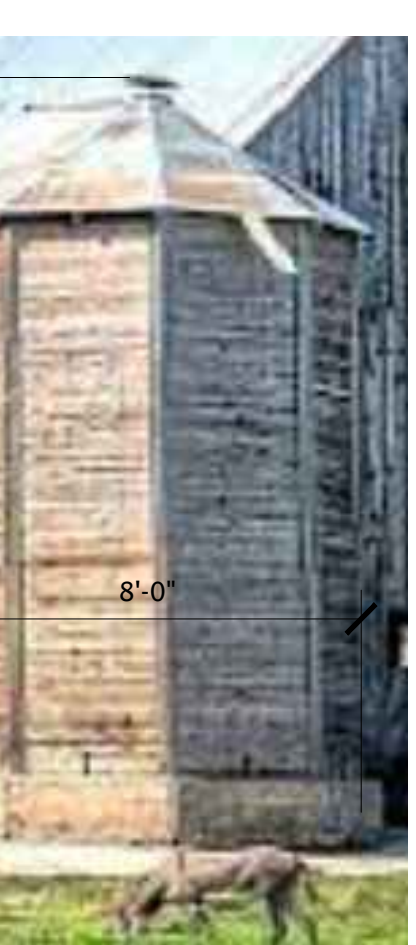


PRELIMINARY: NOT FOR CONSTRUCTION

ICON Shelter Systems Inc.
 1811 LARKIN BLVD.
 BELL AND HOWELL
 BELL AND HOWELL
 BELL AND HOWELL
 BELL AND HOWELL

Elevation

DRAWN BY: MH
 DATE: 6/8/23
 PRELIMINARY ID: 79624
 REVISION:
 BUILDING TYPE: CLS34-82-P4
 PROJECT NAME:
 SHEET 10



WOODEN SILO

NOTES:
 1. CONTRACTOR TO PROVIDE SHOP DRAWINGS FOR SILO INSTALLATION.
 2. SILO SHALL MATCH THE STYLE AND LOOK OF THE IMAGE ABOVE.

9 ICONIC FEATURE 1 - BID ALTERNATE
 SCALE: NOT TO SCALE

P-22-209-109

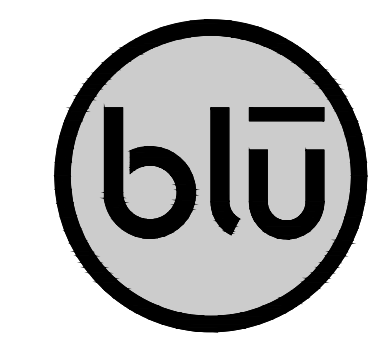


WOODEN WINDMILL

NOTES:
 1. FEATURE TO BE OUTDOOR WATER SOLUTIONS' LARGE WOODEN WINDMILL.
 2. INSTALL PER MANUFACTURER'S INSTRUCTIONS.

10 ICONIC FEATURE 2 - BID ALTERNATE
 SCALE: NOT TO SCALE

P-22-209-108



blu line designs
 planning | landscape architecture | design
 8719 S. Sandy Parkway
 Sandy, UT 84070
 p 801.679.3157

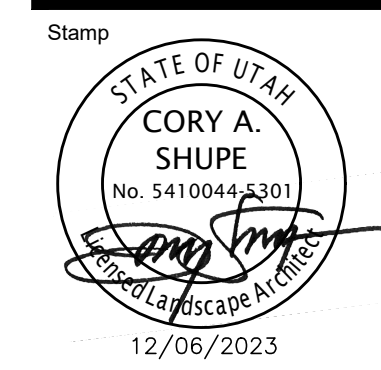
OWNER:
 NIBLEY CITY
 455 W 3200 S,
 Nibley, UT 84321

CONTACT:
 TOM DICKINSON
 PH: 435.737.5848



RIDGELINE PARK | PHASE 1
 401 W EST ROPELATO DRIVE
 NIBLEY, UT 84321

| REVISIONS | |
|-----------|-------------|
| NO. | DESCRIPTION |
| 1 | ISSUE |



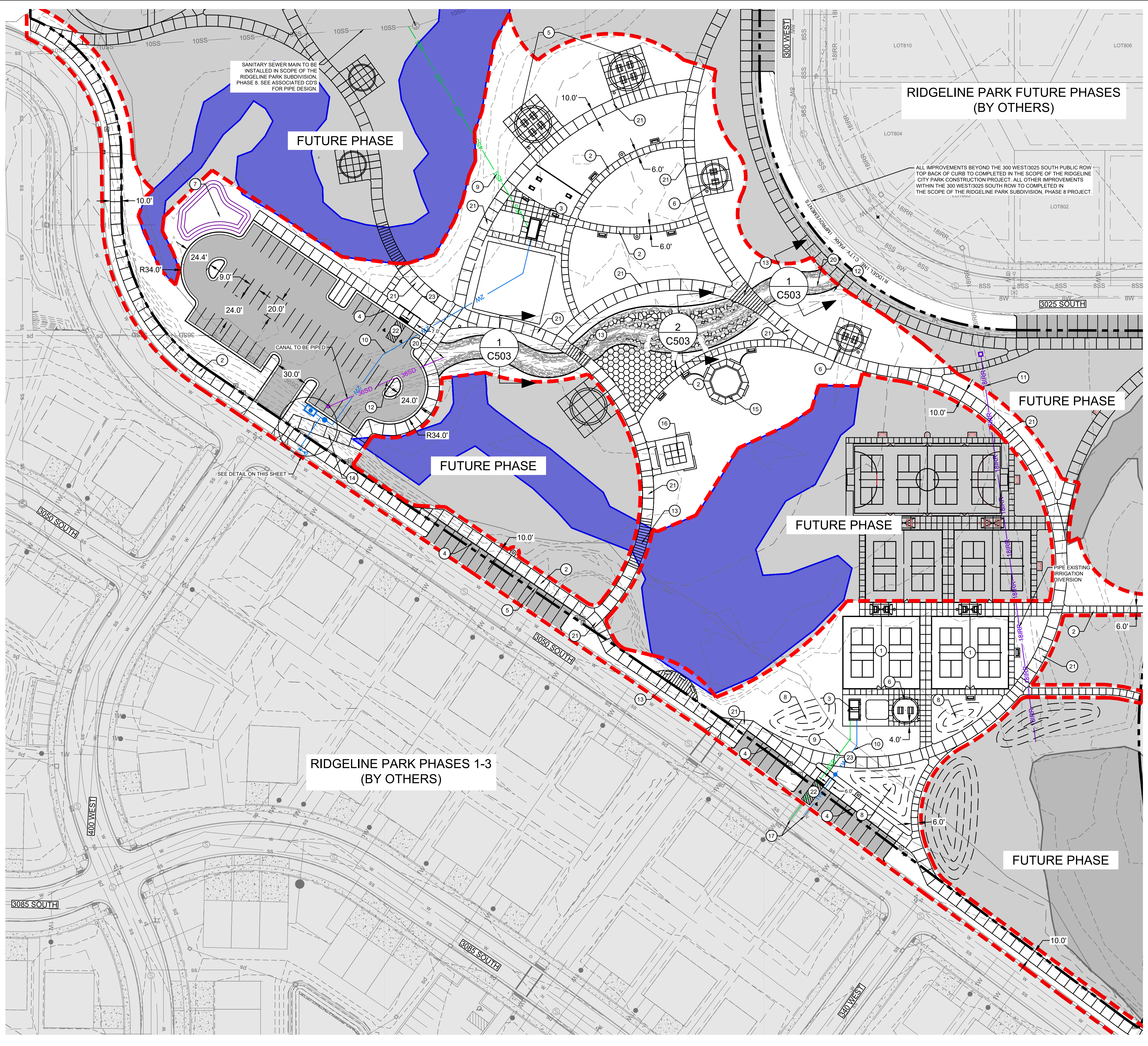
Designed By: RD
 Drawn By: TH
 Date: 12/06/2023
 Checked By: CS
 Project No: 22-209

Drawing Title
 SITE PLAN
 DETAILS

Drawing number

LS503

CONSTRUCTION DOCUMENTS



SANITARY SEWER MAIN TO BE INSTALLED IN SCOPE OF THE RIDGELINE PARK SUBDIVISION PHASE 8. SEE ASSOCIATED CDS FOR PIPE DESIGN.

RIDGELINE PARK FUTURE PHASES (BY OTHERS)

ALL IMPROVEMENTS BEYOND THE 300 WEST/3025 SOUTH PUBLIC ROW TOP BACK OF CURB TO COMPLETED IN THE SCOPE OF THE RIDGELINE CITY PARK CONSTRUCTION PROJECT. ALL OTHER IMPROVEMENTS WITHIN THE 300 WEST/3025 SOUTH ROW TO COMPLETED IN THE SCOPE OF THE RIDGELINE PARK SUBDIVISION, PHASE 8 PROJECT.

RIDGELINE PARK PHASES 1-3 (BY OTHERS)

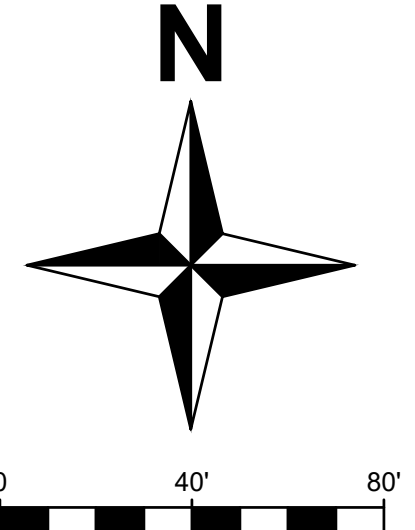
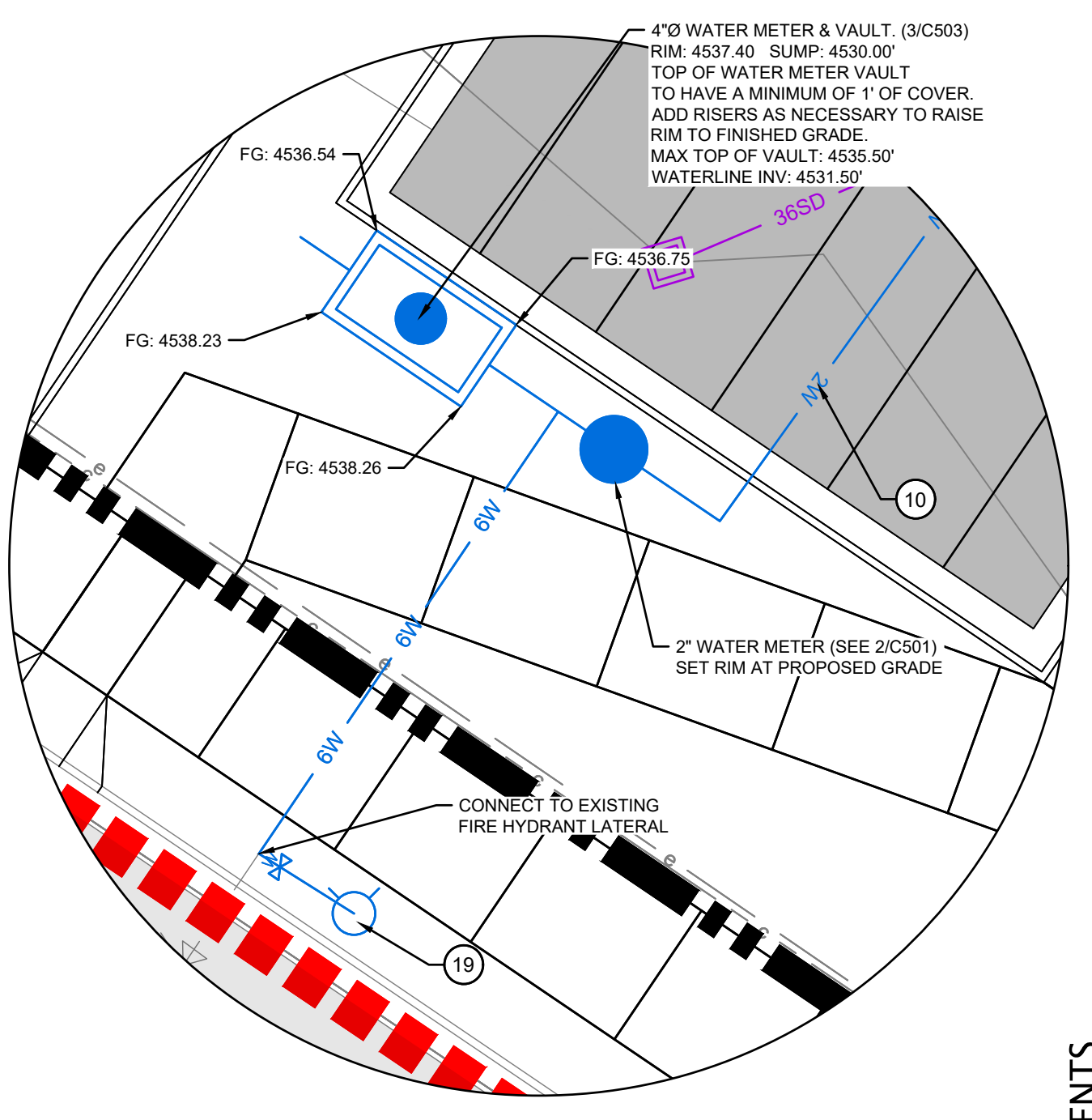
GENERAL NOTES:

- CONTRACTOR TO FIELD VERIFY ALL EXISTING UTILITY LOCATIONS AND CONTACT ENGINEER IF DIFFERENT FROM LOCATIONS DISPLAYED ON THESE PLANS.
- PROVIDE 11'-FT HORIZONTAL SEPARATION BETWEEN CENTERLINES OF WATER & SEWER. 6'-FT HORIZONTAL SEPARATION BETWEEN SECONDARY IRRIGATION AND SEWER.
- ALL SEWER LINES SHALL BE CONSTRUCTED OF PVC SDR-35 MATERIAL IN TYPICAL CONDITIONS. WHERE A SEWER PIPE OR LATERAL PASSES THROUGH OR BENEATH JURISDICTION WETLANDS OR ANY OTHER SURFACE WATERS THE PIPE SHALL BE CONSTRUCTED OF HDPE MATERIAL. SEWER CONNECTIONS TO SEWER MANHOLES SHALL BE GROUTED USING NON-SHRINK GROUT.
- POWER - CONTRACTOR SHALL COORDINATE WITH OWNER AND ROCKY MOUNTAIN POWER TO DETERMINE PRECISE LOCATION AND LAYOUT OF POWER LINES THROUGH DEVELOPMENT. CONTRACTOR SHALL BE RESPONSIBLE TO TRENCH, BED, INSTALL AND FILL IN THE POWER TRENCH AND PROVIDE THE REQUIRED PVC SCHEDULE 40 CONDUIT.
- TELEPHONE AND CABLE - CONTRACTOR SHALL COORDINATE WITH UTILITY COMPANIES FOR LOCATION OF CONDUIT CROSSINGS AND SHALL INSTALL ALL CONDUITS.
- GAS - CONTRACTOR SHALL COORDINATE INSTALLATION OF GAS WITH DOMINION ENERGY.
- MECHANICAL JOINT RESTRAINTS (4/C502) AND CONCRETE THRUST BLOCKS (5/C501) ARE TO BE INSTALLED ON ALL PRESSURIZED WATER LINES AT ALL TEES, WYES, BENDS, & HYDRANTS PER NIBLEY CITY STANDARDS AND SPECIFICATIONS.

① SITE/ UTILITY SHEET KEY NOTES:

- PROVIDE, INSTALL, AND/OR CONSTRUCT THE FOLLOWING PER THE SPECIFICATIONS GIVEN OR REFERENCED. THE DETAILS NOTED, AND/OR AS SHOWN ON THE CONSTRUCTION DRAWINGS:
- PICKLEBALL COURTS. SEE LANDSCAPE PLANS.
 - CONCRETE SIDEWALK (TYP.). (SEE 4/C501)
 - PUBLIC RESTROOM
 - ASPHALT PAVEMENT & CURB (SEE 5/C501 & 4/C501)
 - CIRCULAR PAVILLION (3' Ø)
 - CIRCULAR PAVILLION (24' Ø)
 - STORMWATER POND (SEE C301)
 - BERM (SEE LANDSCAPE PLANS)
 - SANITARY SEWER SERVICE (3/C501)
 - CULINARY WATER SERVICE (2/C501)
 - PRIVATE IRRIGATION DIVERSION
 - COLLEGE IRRIGATION CANAL (SEE C301). ADD CONCRETE END SECTION WITH TRASH GUARDS AT END OF PIPE.
 - BOARDWALK
 - STAIRS (12.5" TREADS @ 2% WITH 5" (6") STEPS)
 - GAGA BALL PIT
 - 9-SQUARE AREA
 - PATCH ASPHALT
 - NOT USED
 - RELOCATE EXISTING FIRE HYDRANT & ADD GATE VALVE
 - FLARED END SECTION AND TRASH GUARD. (3/C502)
 - DRIVE-ABLE CONCRETE WALKWAY (1/C501)
 - ADA PARKING STALL WITH ADA SIGNAGE AND MARKINGS.
 - PERPENDICULAR ADA RAMP. (4/C503)

WATERLINE CONNECTION DETAIL
SCALE: 1" = 10'



blu
blu line designs
planning | landscape architecture | design
8710 S. Sandy Parkway
Sandy, UT 84070
p 801.479.3157

OWNER:
NIBLEY CITY
450 W. 300 S.
NIBLEY, UT, 84321

CONTACT:
TOM DICKENSON
PH: 435.767.8848

RIDGELINE PARK PHASE 1
401 W ROPELATO DRIVE
NIBLEY, UT 84321

| NO. | REVISIONS |
|-----|-----------|
| | |

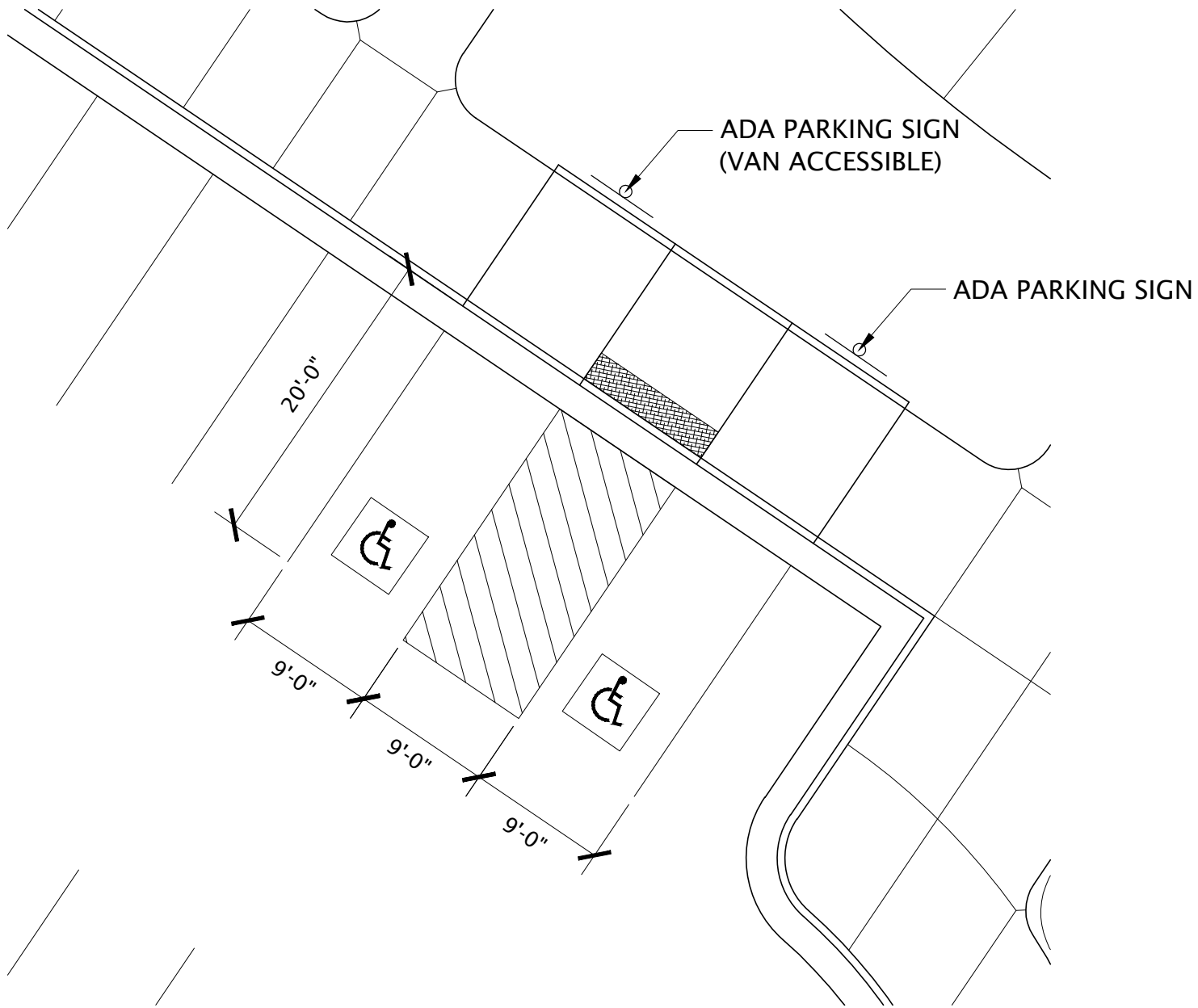


Drawn By: L. MUMFORD
Date: 11/10/24
Checked By: M. TAYLOR
Project No: 22-270

Drawing Title
SITE & UTILITY

Drawing number
C201

CONSTRUCTION DOCUMENTS



ADA PARKING STALL EXHIBIT