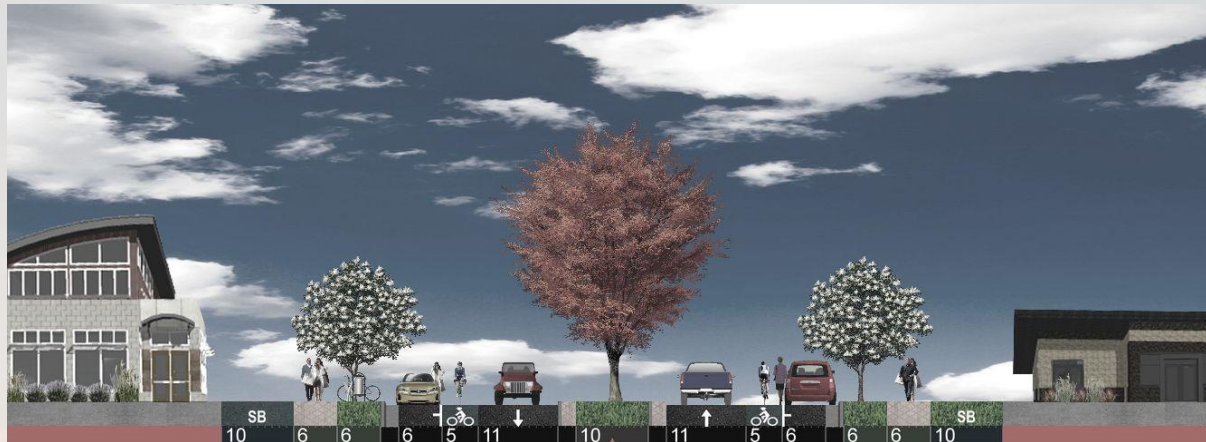


SR-165 & 3200 S RE-ALIGNMENT PROJECT

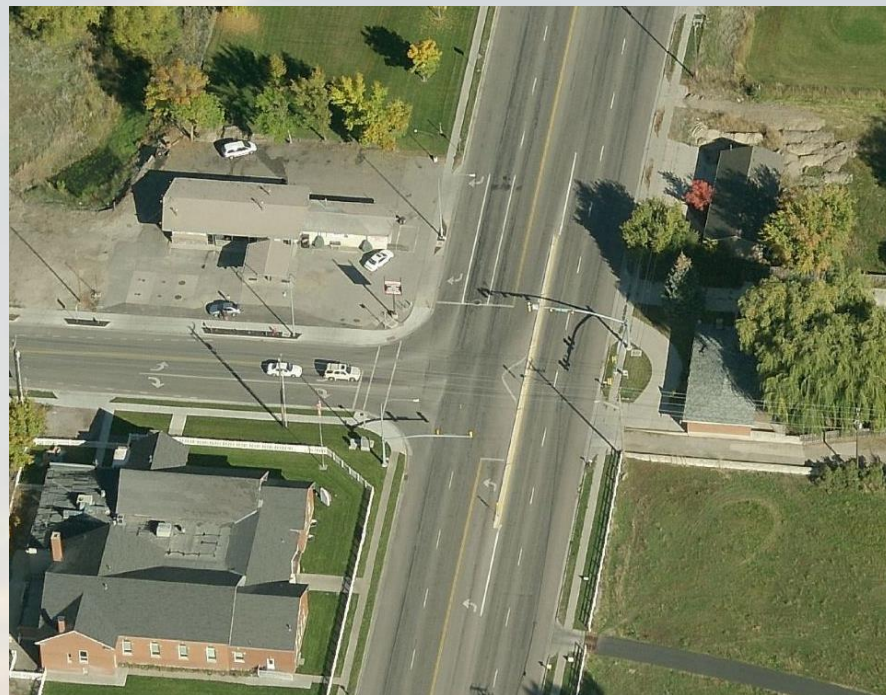
City Council Presentation



Project Background

EXISTING CONDITIONS

- Unsafe intersection
- Left-turners merge into 50 mph
- No cross-walks
- Cars do not stop for peds/bikes
- No direct eastbound route
- Average of 7 accidents per year (including fatalities)
 - 2011: 7 crashes
 - 2012: 4 crashes
 - 2013: 11 crashes
 - 2014: ?



Nibley Growth

TRAFFIC LEVELS

- Current Average Daily Traffic
 - SR-165 → 13,930
 - 3200 South → 2,640
- 2040 Average Daily Traffic
 - SR-165 → 28,000
 - 3200 South → 7,000

Historical population		
Census	Pop.	%±
<u>1940</u>	271	—
<u>1950</u>	304	12.2%
<u>1960</u>	333	9.5%
<u>1970</u>	367	10.2%
<u>1980</u>	1,036	182.3%
<u>1990</u>	1,167	12.6%
<u>2000</u>	2,045	75.2%
<u>2010</u>	5,438	165.9%
<u>2020</u>	9,517 to 12,126	75% to 125%
<u>2030</u>	14,276 to 24,252	50% to 100%

Public Outreach



0 200 400 800 1,200 1,600 Feet



Property Owners: Casey Schenavar
Address: 3075 South Main, Nibley UT 84321
Owner phone number: 435-881-4399



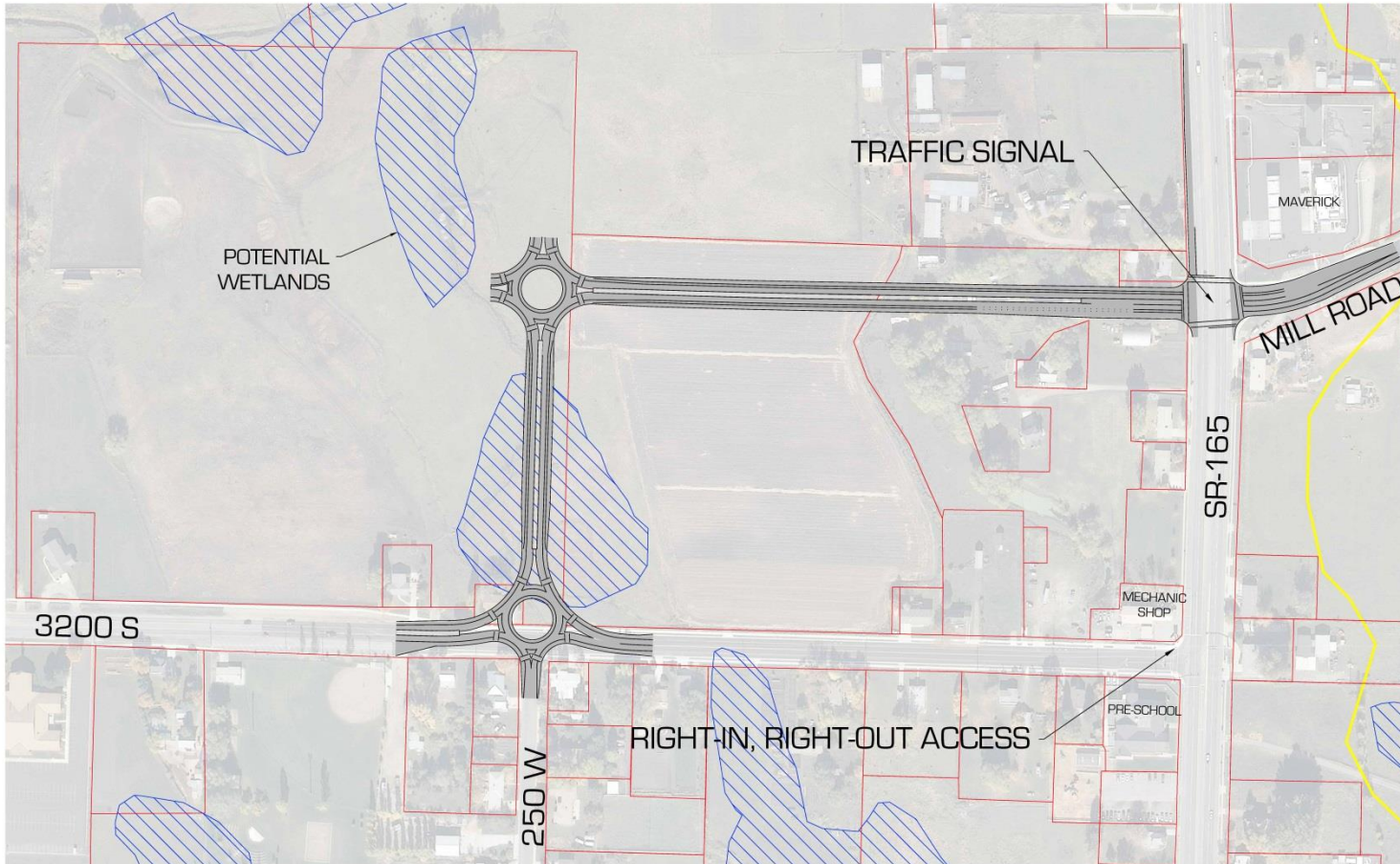
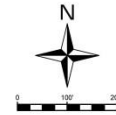
Size of lot: 0.21 Acres



Project Priorities



SR-165 @ 3200 S & MILL RD
OPTION 1
SCALE: 1"=100'



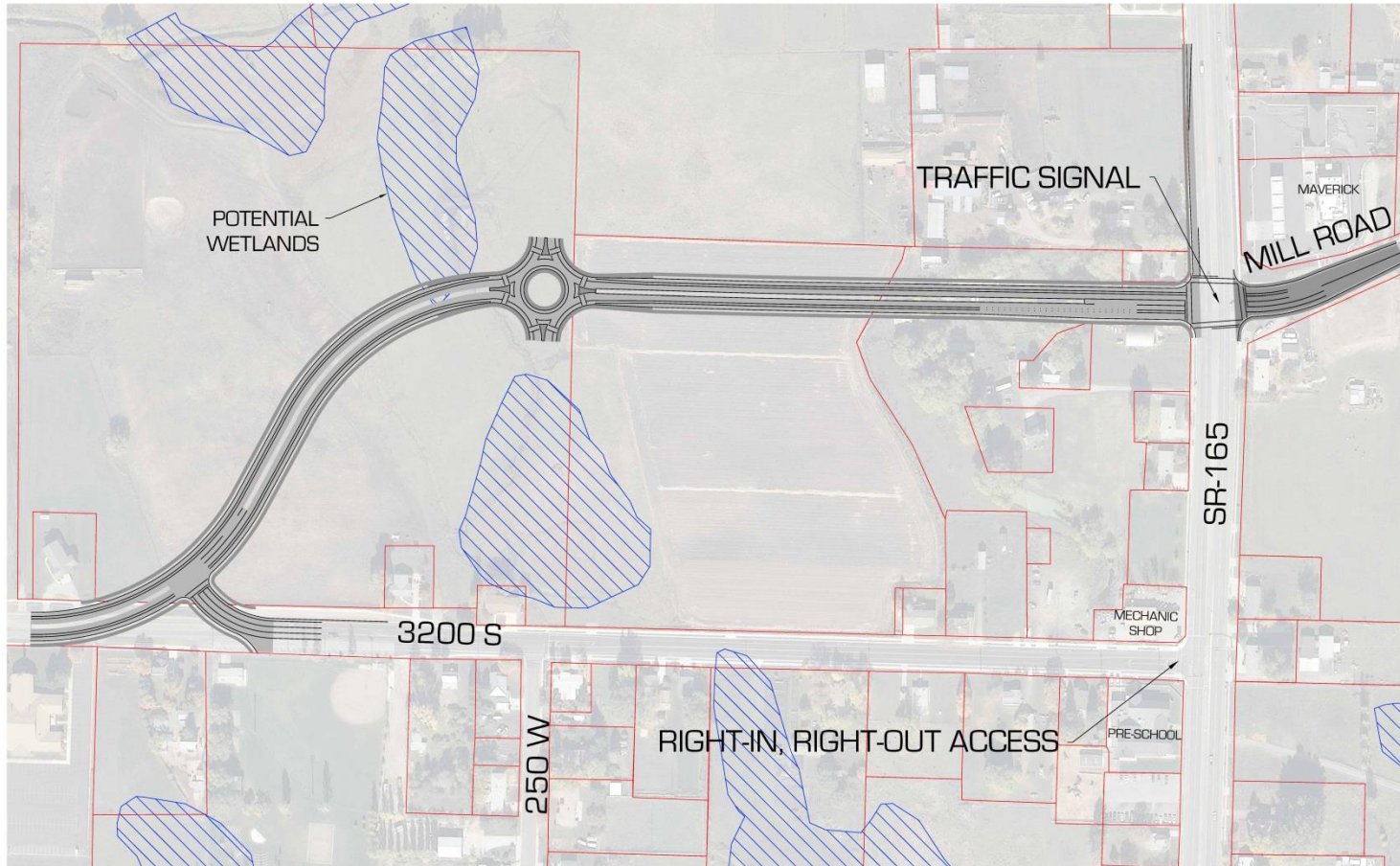
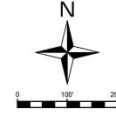
SR-165 @ 3200 S & MILL RD
PRELIMINARY CONCEPTS
NIBLEY, UTAH

MARK DATE:	DESCRIPTION:								
PROJECT #:		505-1401							
DRAWN BY:		M. TAYLOR							
REVIEWED BY:		D. MACFARLANE							
ISSUED:		08/24/2014							

OPTION 1

C-101

SR-165 @ 3200 S & MILL RD
 OPTION 2
 SCALE: 1"=100'



civilsolutionsgroup inc.

540 W GOLF COURSE RD SUITE B1
 PROVIDENCE UT 84332
 P: 435.213.3762
 F: 435.213.3762
 www.civilsolutionsgroup.net

SR-165 @ 3200 S & MILL RD
 PRELIMINARY CONCEPTS
 NIBLEY, UTAH

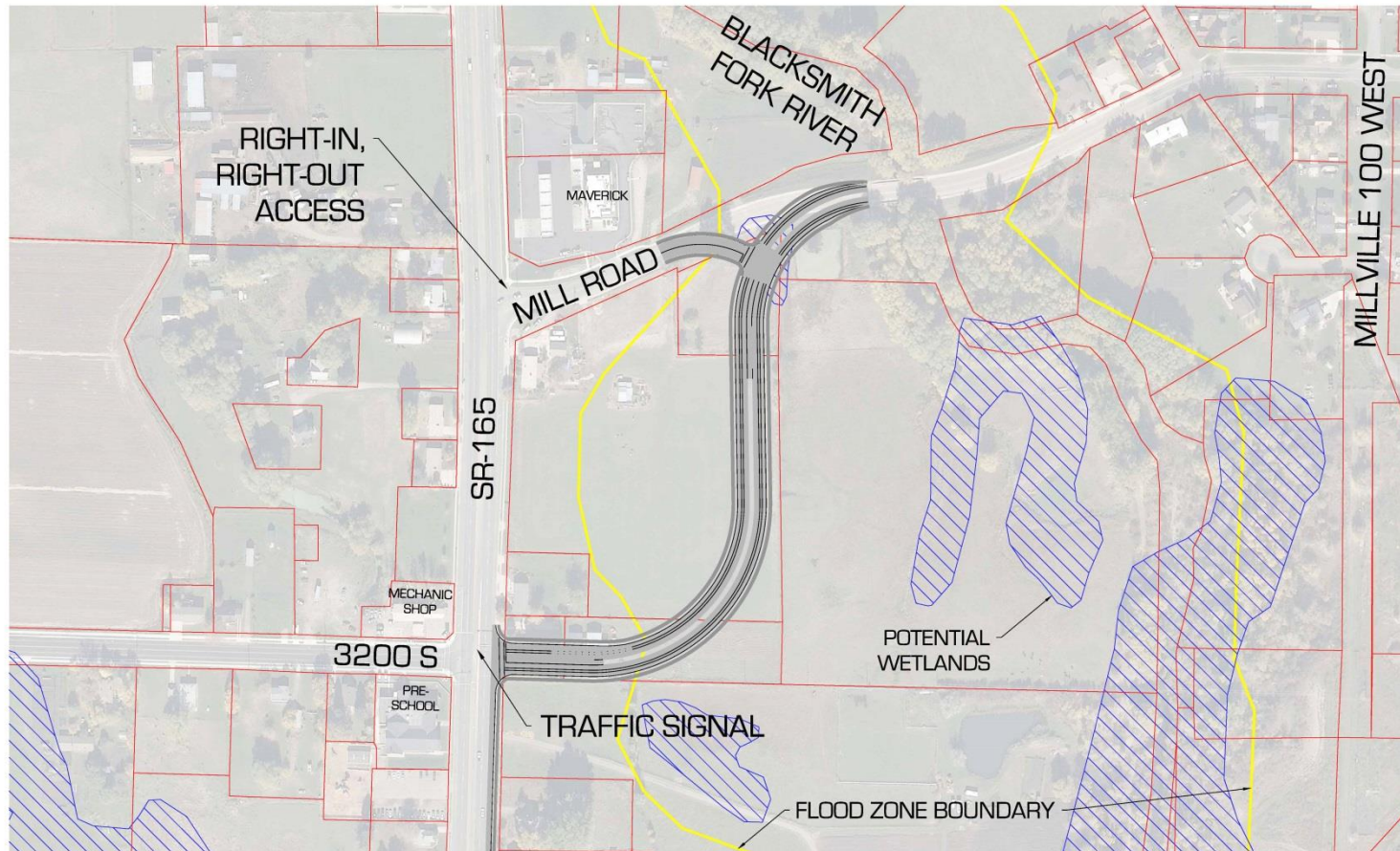
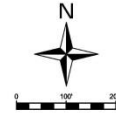
DATE	DESCRIPTION

PROJECT #: 505-1401
 DRAWN BY: M. TAYLOR
 REVIEWED BY: D. MACFARLANE
 ISSUED: 08.24.2014

OPTION 2

C-102

SR-165 @ 3200 S & MILL RD
OPTION 3
SCALE: 1"=100'



civilsolutionsgroup inc.



540 W GOLF COURSE RD SUITE B1
PROVIDENCE, UT 84332
P: 435.213.3762
F: 435.213.3762
www.civilsolutionsgroup.net

SR-165 @ 3200 S & MILL RD
PRELIMINARY CONCEPTS
NIBLEY, UTAH

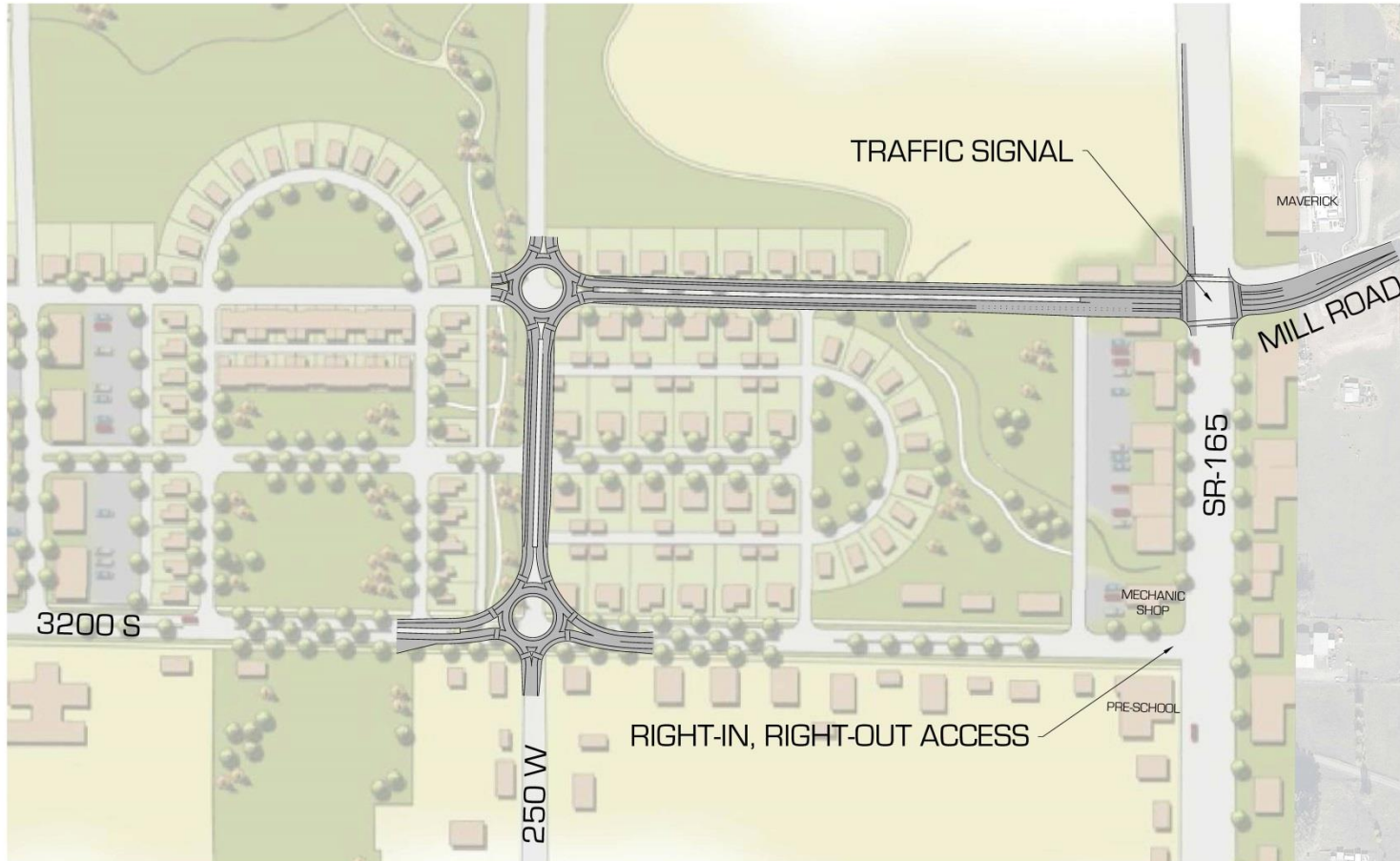
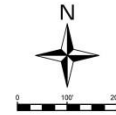
[illegible]

PROJECT #:	505-1401
DRAWN BY:	M. TAYLOR
REVIEWED BY:	D. MACFARLANE
ISSUED:	08.24.2014

OPTION 3

C-103

SR-165 @ 3200 S & MILL RD
OPTION 1
SCALE: 1"=100'



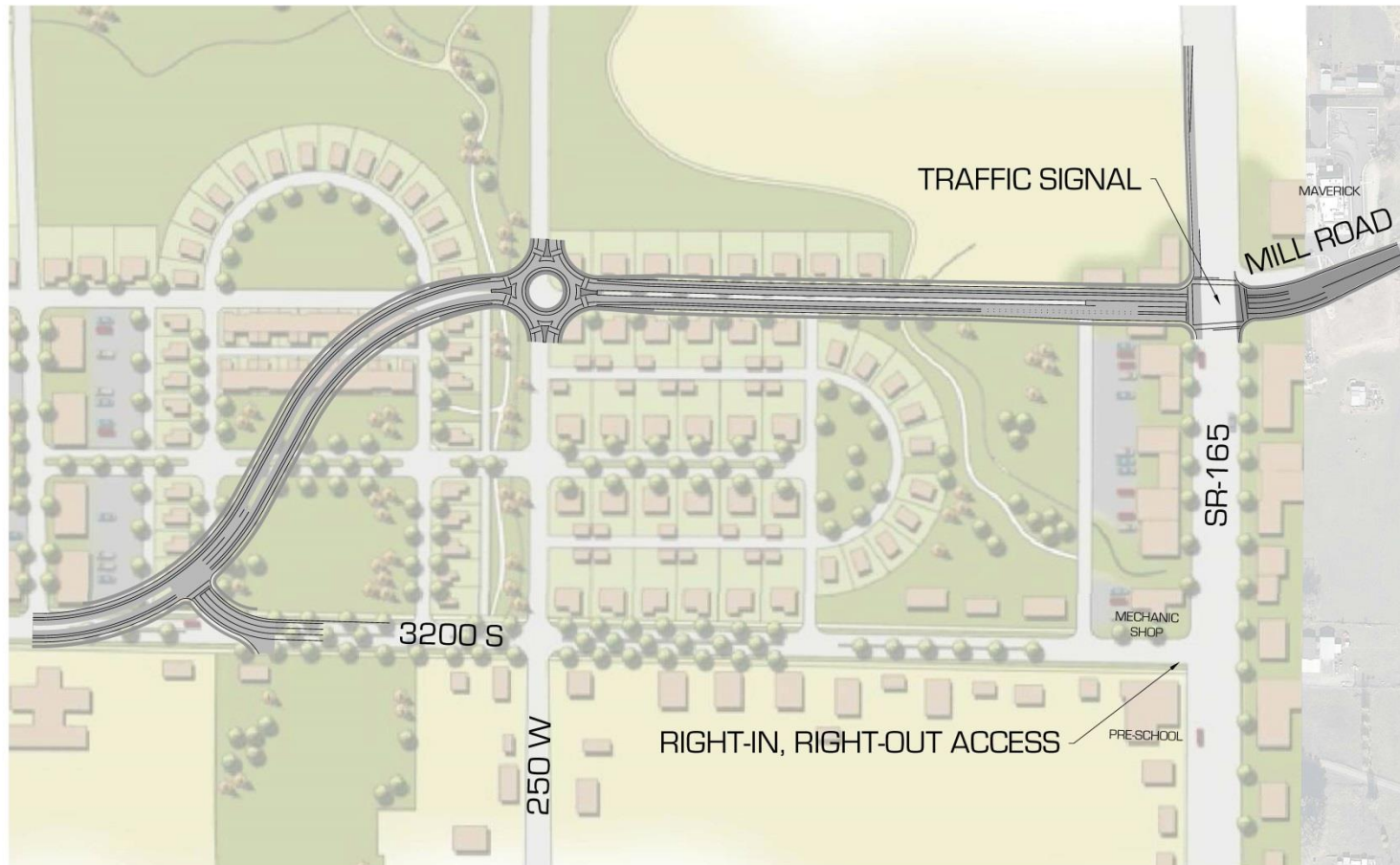
SR-165 @ 3200 S & MILL RD
PRELIMINARY CONCEPTS
NIBLEY, UTAH

MARK	DATE	DESCRIPTION	PROJECT #:	505-1401
			DRAWN BY:	M. TAYLOR
			REVIEWED BY:	D. MACFARLANE
			ISSUED:	08/24/2014

OPTION 1

C-101

SCALE: 1"=100'



civilsolutionsgroup inc.

540 W GOLF COURSE RD SUITE B1
PROVIDENCE, UT 84332

PHUMBUENDE, UT 84332
P: 435.213.3762

F: 4352133762

www.civilsolutionsgroup.net

SR-165 @ 3200 S & MILL RD
PRELIMINARY CONCEPTS
NIBLEY, UTAH

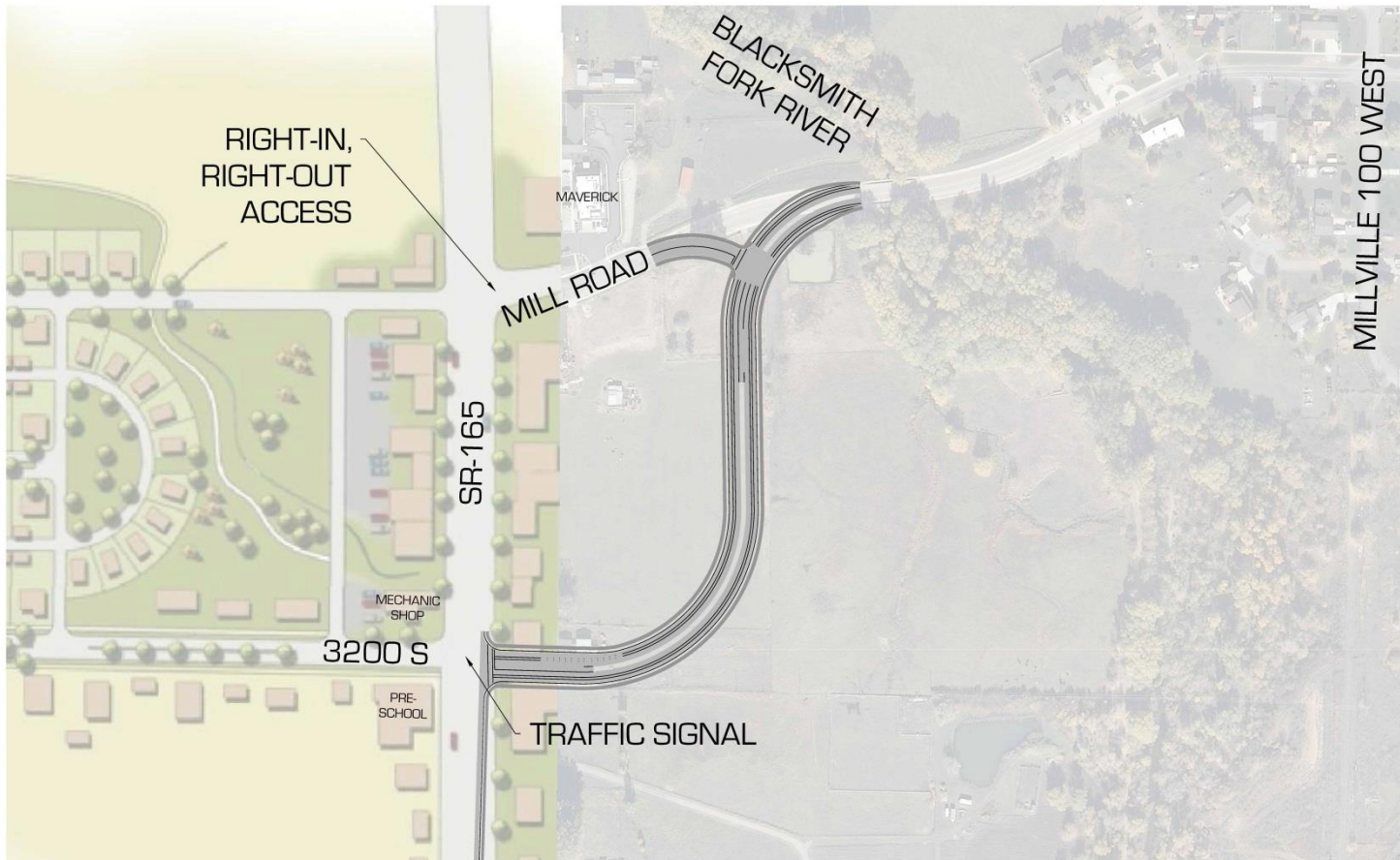
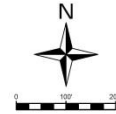
[illegible]

PROJECT #:	505-1401
DRAWN BY:	M. TAYLOR
REVIEWED BY:	D. MACFARLANE
ISSUED:	08.24.2014

OPTION 2

C-102

SR-165 @ 3200 S & MILL RD
OPTION 3
SCALE: 1"=100'



civilsolutionsgroup inc.



540 W GOLF COURSE RD SUITE B1
PROVIDENCE, UT 84332
P: 435.213.3762
F: 435.213.3762
www.civilsolutionsgroup.net

SR-165 @ 3200 S & MILL RD
PRELIMINARY CONCEPTS
NIBLEY, UTAH

[illegible]

PROJECT #:	505-1401
DRAWN BY:	M. TAYLOR
REVIEWED BY:	D. MACFARLANE
ISSUED:	08.24.2014

OPTION 3

C-103

COMPARISON SUMMARY

EVALUATION CRITERIA	WEIGHT	OPTION 1 (30 mph)			OPTION 2 (35 mph)			OPTION 3 (30 mph)		
		Measurement	Scoring (1 to 5)	Weighted Subtotal	Measurement	Scoring (1 to 5)	Weighted Subtotal	Measurement	Scoring (1 to 5)	Weighted Subtotal
Intersection Pedestrian & Bike Safety	10%	Good	4	0.4	Good	4	0.4	Good	4	0.4
Contribution to Vicinity Pedestrian & Bike Safety	10%	Excellent	5	0.5	Adequate	3	0.3	Poor	1	0.1
Vehicular Safety	10%	Good	4	0.4	Adequate	3	0.3	Fair	2	0.2
Traffic Flow (2040 Intersection Delay in Seconds)	10%	21	3	0.3	20	4	0.4	18	5	0.5
Economic Development Potential	15%	Excellent	5	0.5	Good	4	0.4	Fair	2	0.2
Contribution to General Plan	5%	Excellent	5	0.5	Good	4	0.4	Fair	2	0.2
Contribution to Transportation Master Plan	5%	Excellent	5	0.5	Good	4	0.4	Fair	2	0.2
Home Relocations	5%	2	2	0.2	1	4	0.4	2	3	0.3
Potential Wetland Impacts (acres)	5%	0.96	2	0.2	0.08	4	0.4	0.33	3	0.3
Loss of Farmland (acres)	5%	5.2	3	0.3	6.2	2	0.2	3.5	5	0.5
Total Project Cost (2017 Dollars)	20%	\$ 3,700,000	3	0.3	\$ 3,600,000	3	0.3	\$ 2,200,000	5	0.5
Nibley's Total (7% Contribution)		\$ 259,000			\$ 252,000			\$ 154,000		

GRAND TOTAL:

4.1

3.9

3.4

